



CAAC Design and Construction Update

3-17-2022



2022 Projects

New Buildings & Additions

Marshdale ES - Replacement HCM – GC GH Phipps

Construction



D'Evelyn – 8 CR Addition HCM – GC Himmelman

Construction



Powderhorn ES - Addition Hollis & Miller – Himmelman

Construction



Prospect Valley ES - Replacement MOA – GH Phipps

Construction



Evergreen MS Efficiency & Future Ready Construction

AMD – Haselden



Evergreen HS
Efficiency Future Ready
DLR – CMGC JHL

Construction



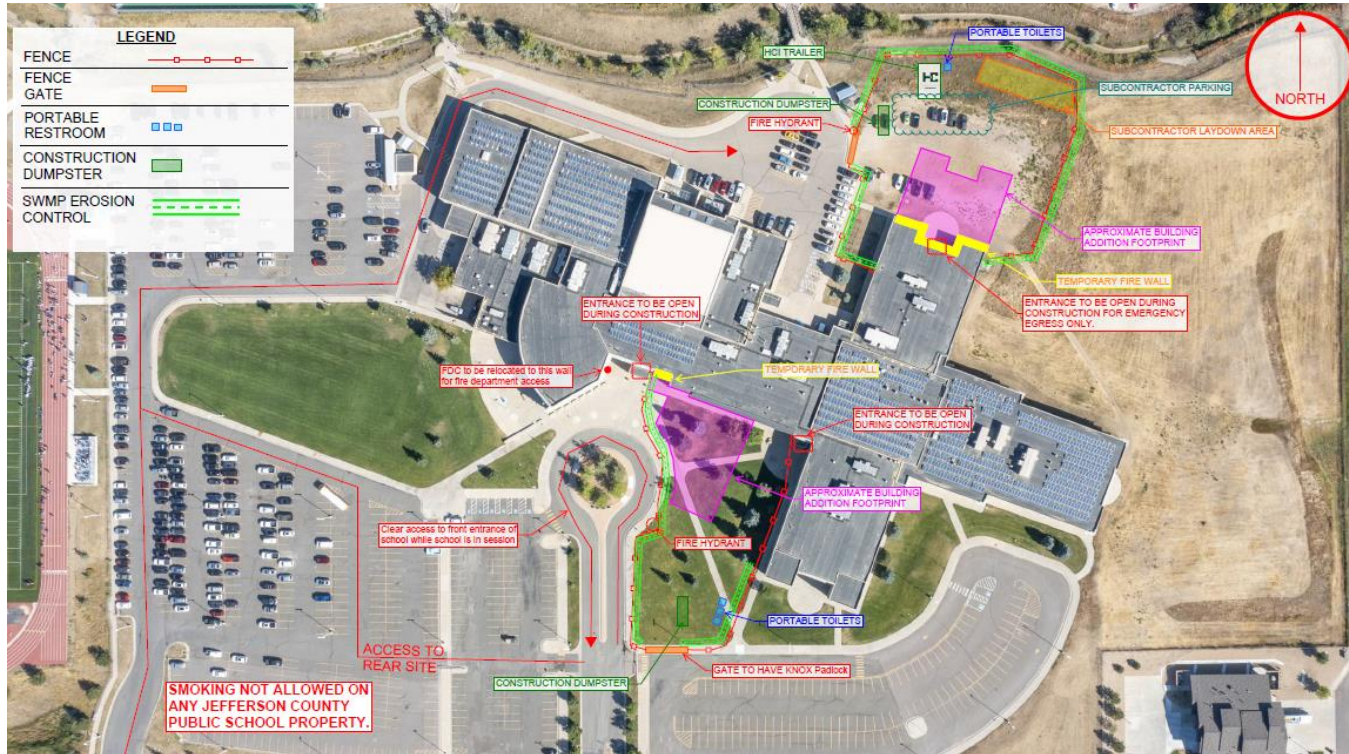
Jeffco Open - Addition HCM - Bassett

Construction



Ralston Valley HS - Addition EUA - Himmelman

Construction



Standley Lake HS - Addition Cannon – FCI Constructors

Construction



STANDLEY LAKE HIGH SCHOOL

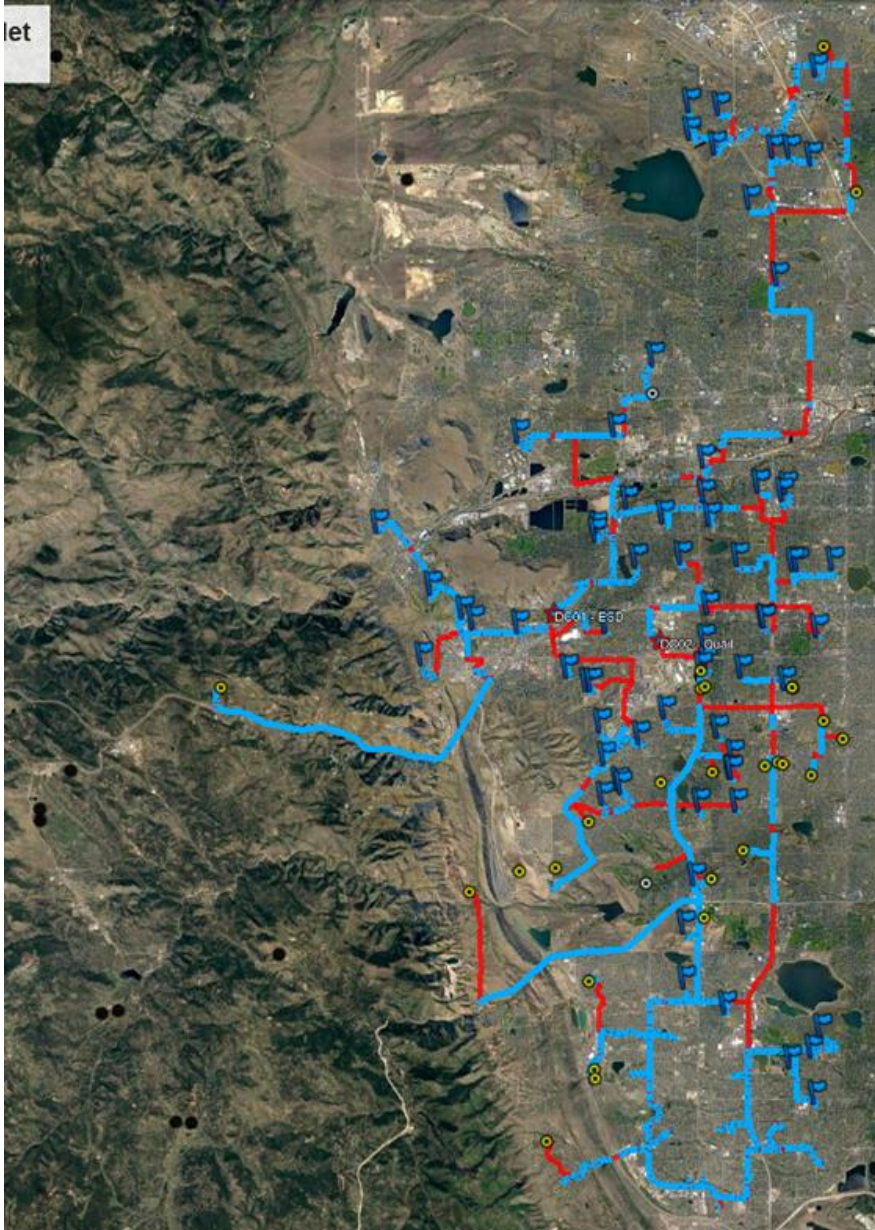


SECURE ENTRY &
AUXILIARY GYMNASIUM ADDITION



JeffcoNET Henkels & McCoy - Design Build

Construction



Project Information

Project Start – April 29, 2020

Total Miles of conduit to be bored – 119

Miles installed – 68 (57%)

Fiber placed at 98 schools (MDF to Street)
Complete remainder in April

9 crews working primarily on the North Ring

2022

43 - Efficiency

Future Ready

&

DW projects

DW – Roofing
Pennington ES
Roof Tech – Grabau

Construction



DW – Roofing -
Campbell ES (Grabau), Fairmount ES (FR) ,
S Lakewood ES (DC), Summit Ridge MS (UM), &
Pennington ES (Grabau)
SR+DK

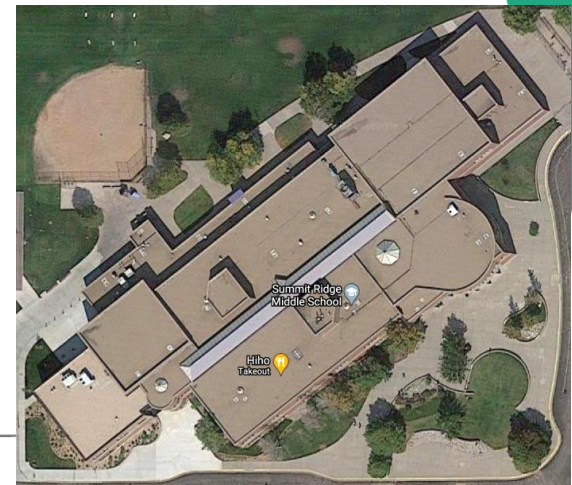


Fairmount

S Lakewood



Campbell

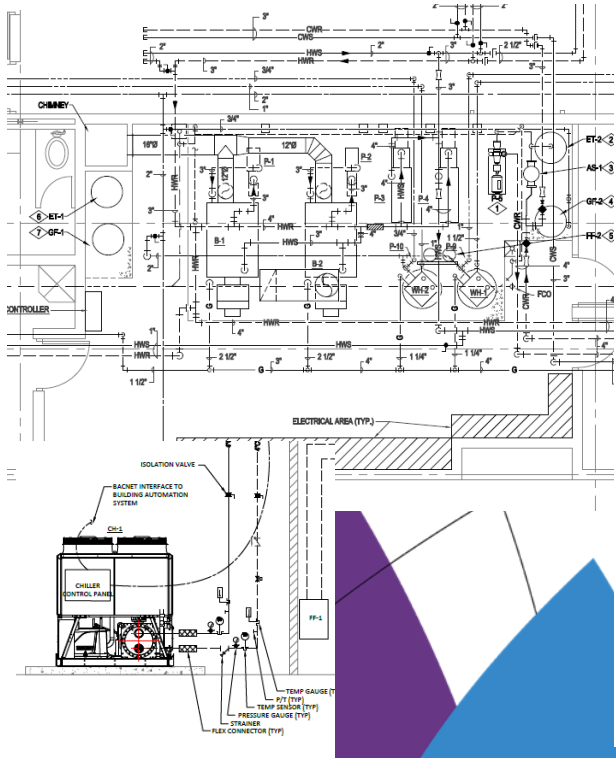


Summit Ridge BOE 2/3/22

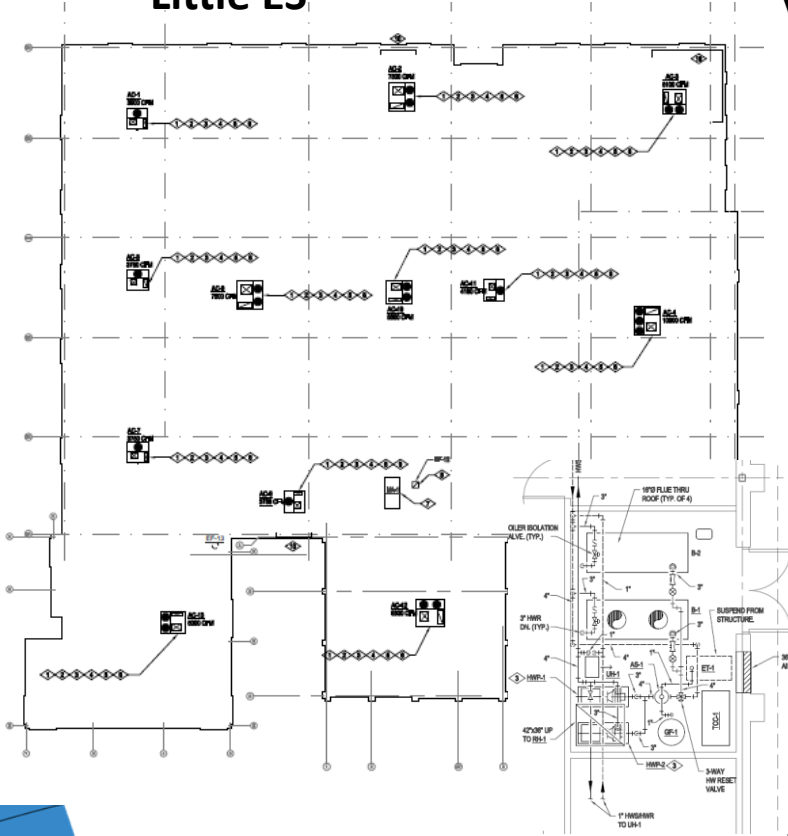
DW Mechanical 2022 Campbell ES, Little ES & Van Arsdale ES

Columbine Engineering – US Engineering

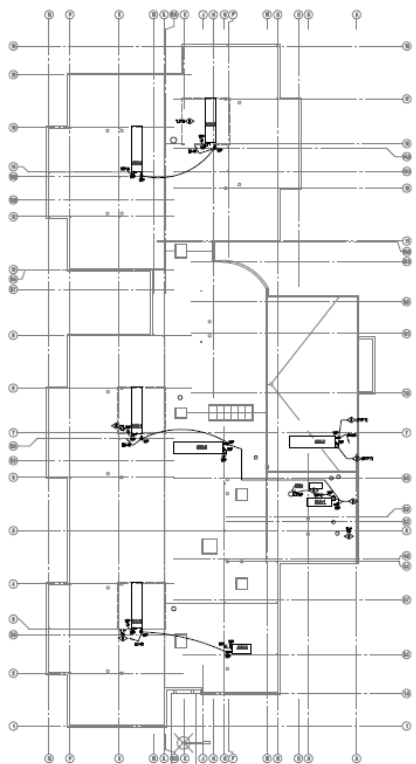
Campbell ES



Little ES



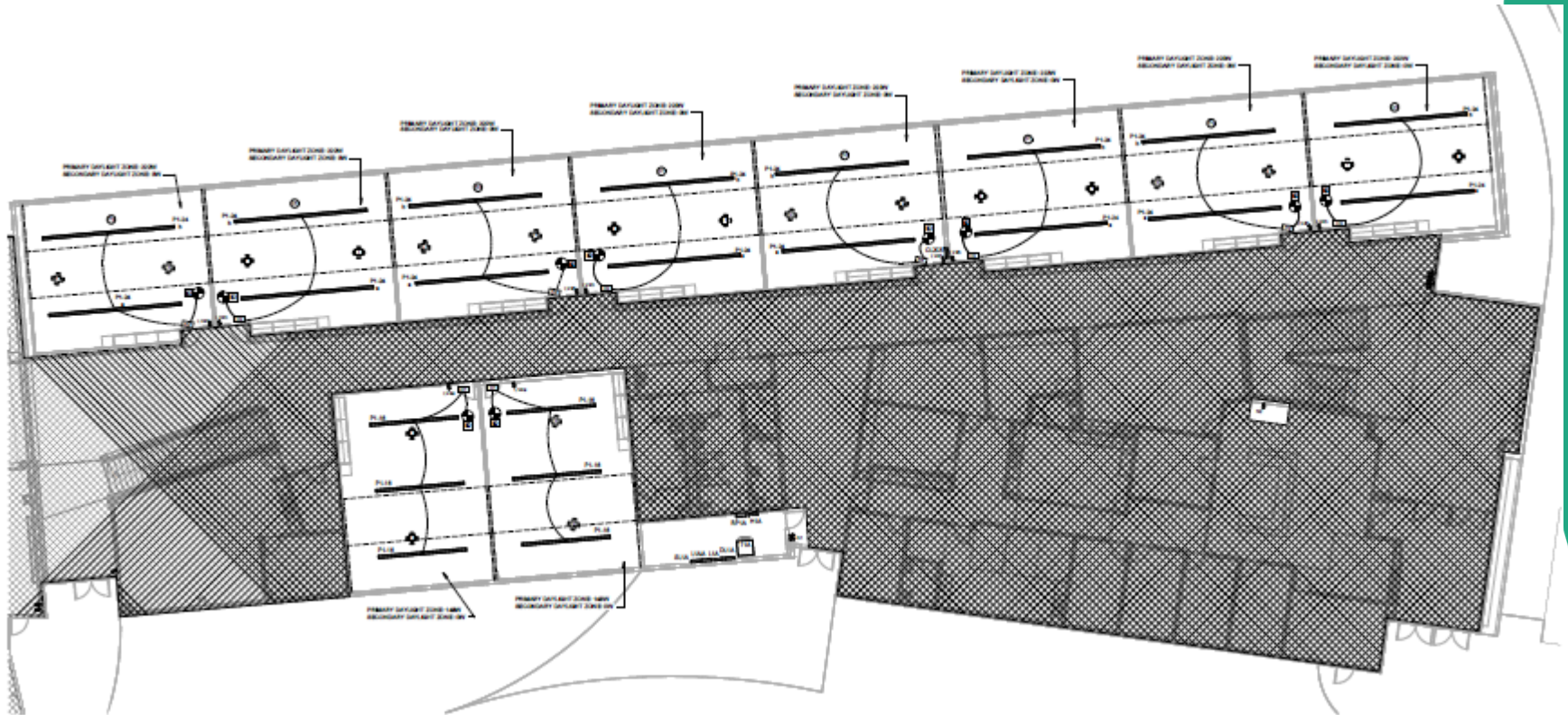
Van Arsdale ES



Efficiency Future Ready Golden HS

Construction

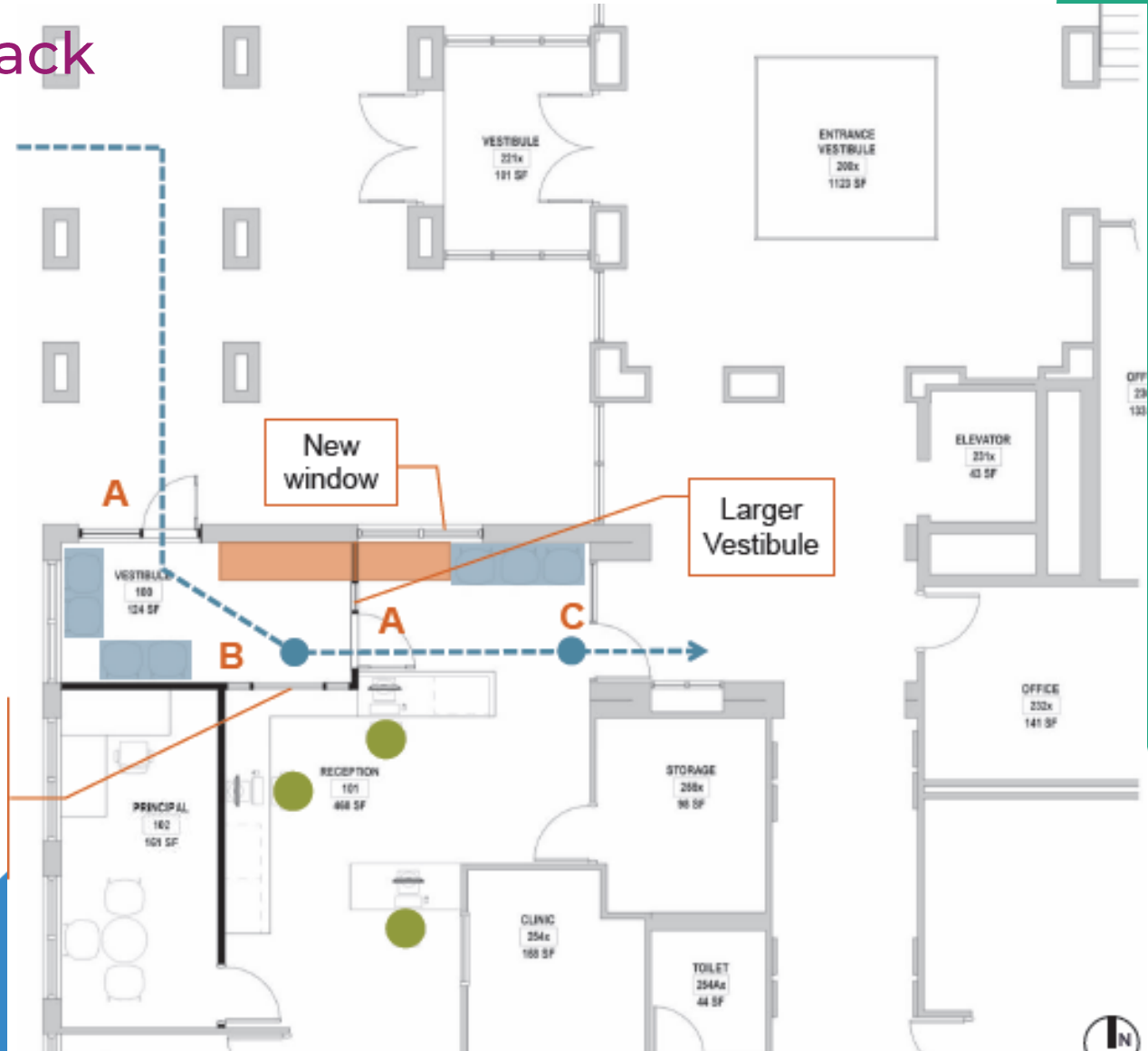
H&M – Singletrack



Efficiency Future Ready Mitchell ES

Construction

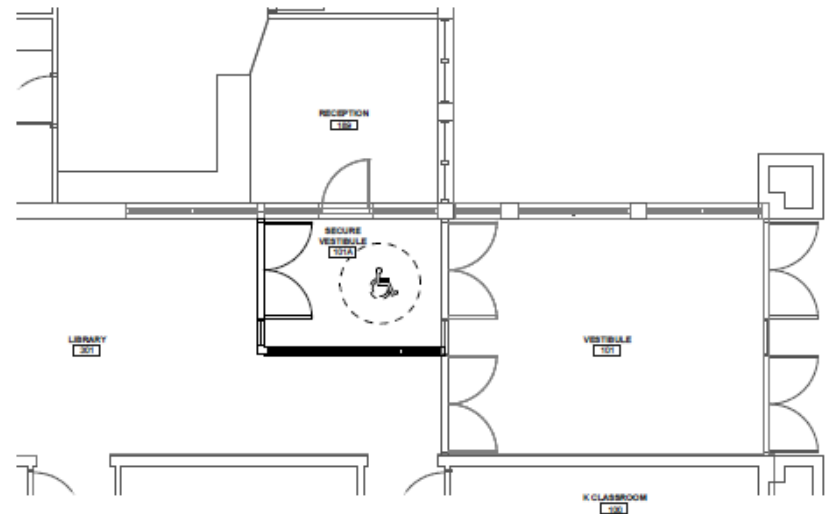
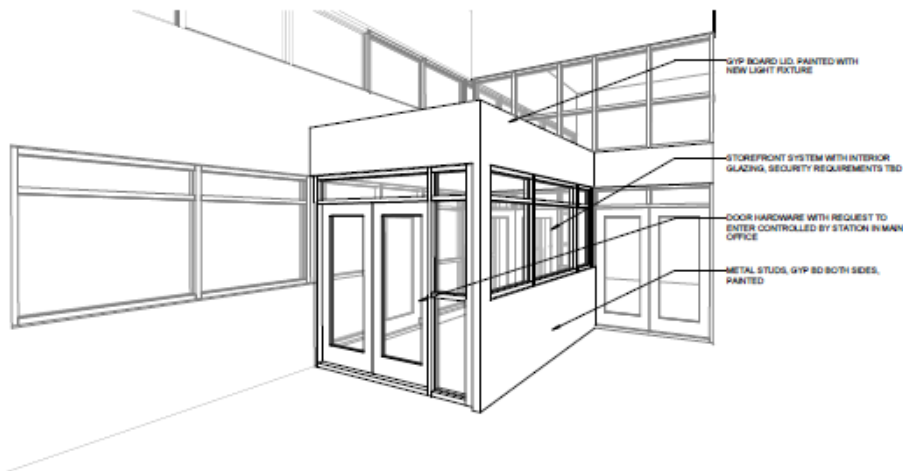
H&M – Singletrack



Efficiency Future Ready Elk Creek ES

Construction

BVH – SCS



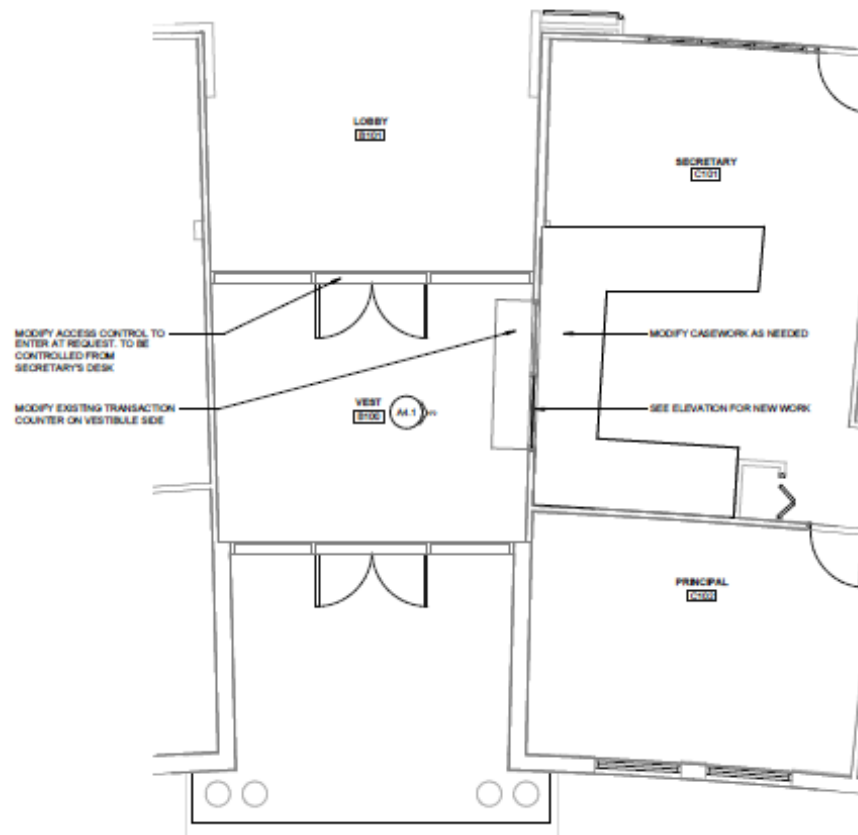
3 VESTIBULE PERSPECTIVE - FOR REFERENCE ONLY

1 ENLARGED VESTIBULE PLAN
1/4" = 1'-0"

Efficiency Future Ready West Jefferson ES

Construction

BVH – Bryan

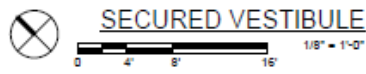
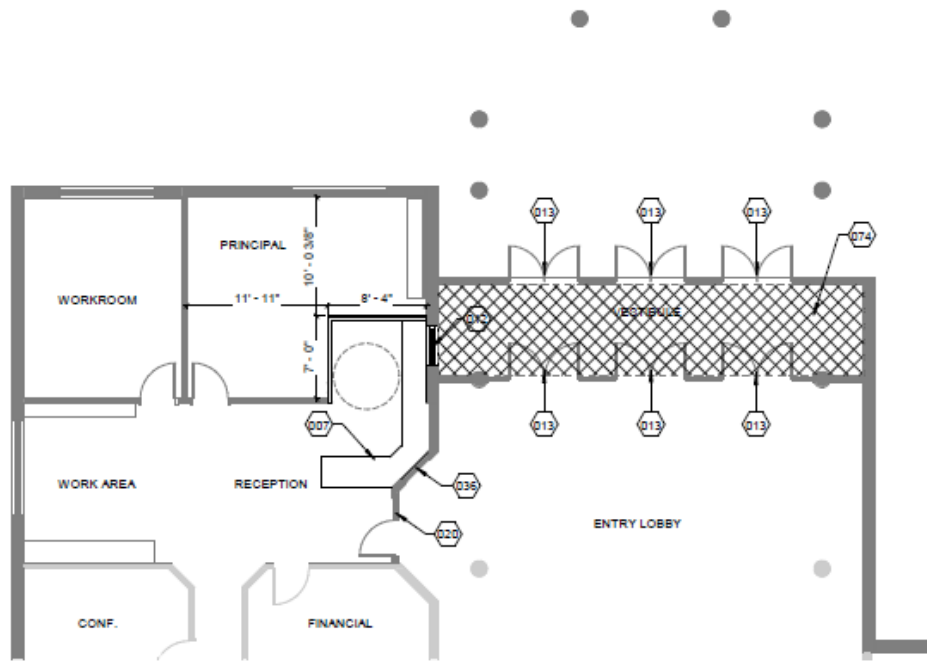


1 ENLARGED VESTIBULE PLAN
1/4" = 1'-0"

Efficiency Future Ready Emory ES

Construction

Treanor HL- Crossland

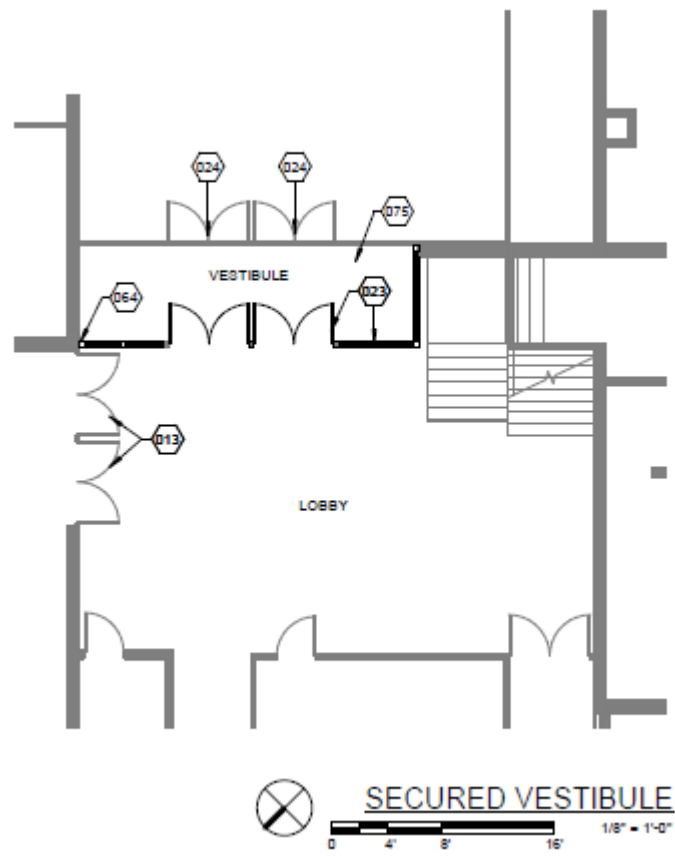


1

Efficiency Future Ready Red Rocks ES

Construction

Treanor HL- Crossland

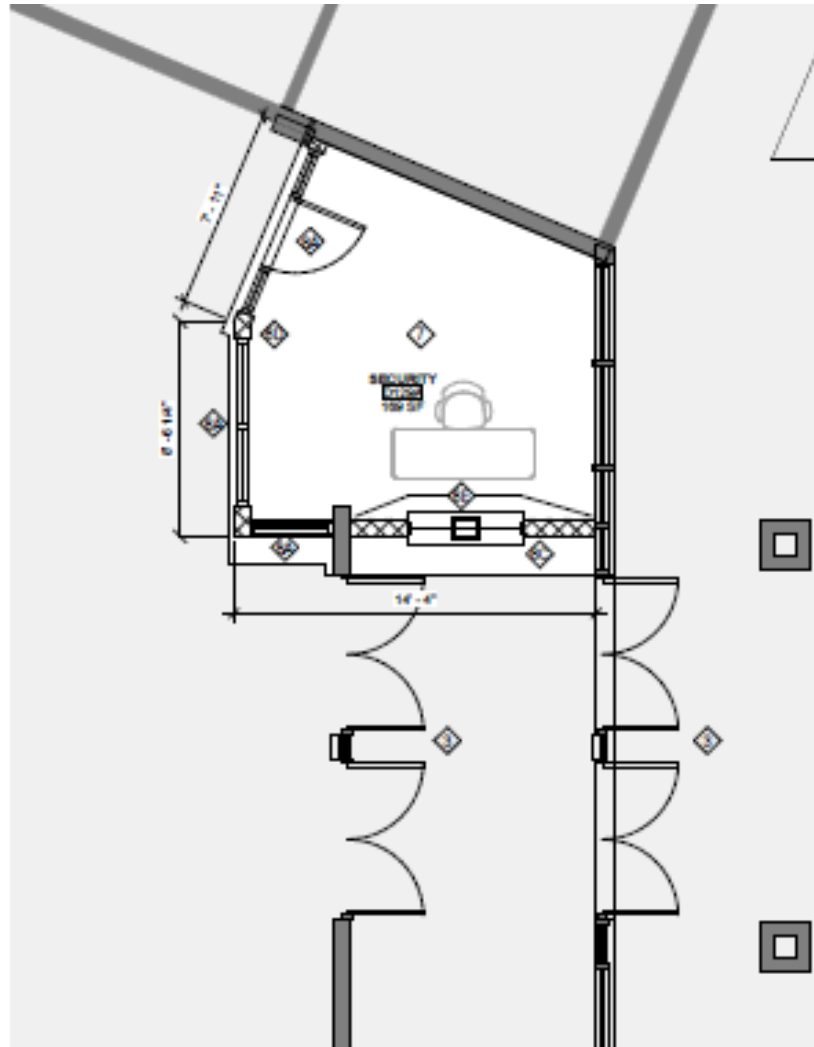


2

Efficiency Future Ready Lakewood HS

Construction

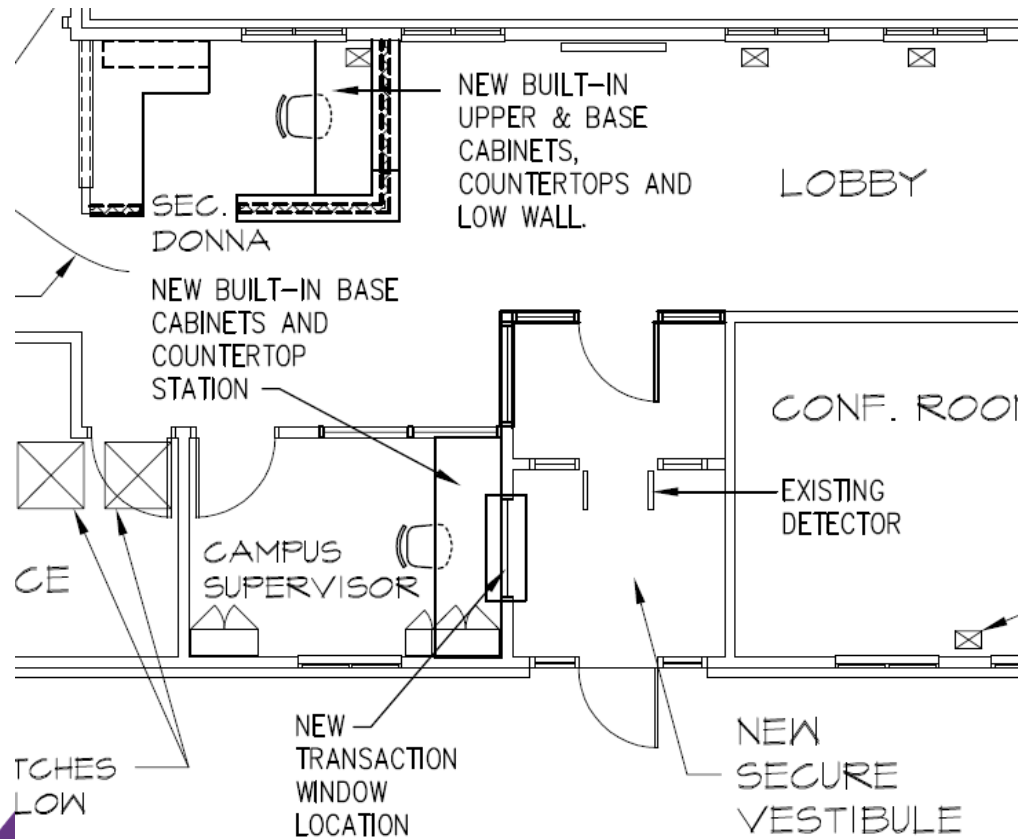
HCM – AD Miller



Efficiency Future Ready Longview HS

Construction

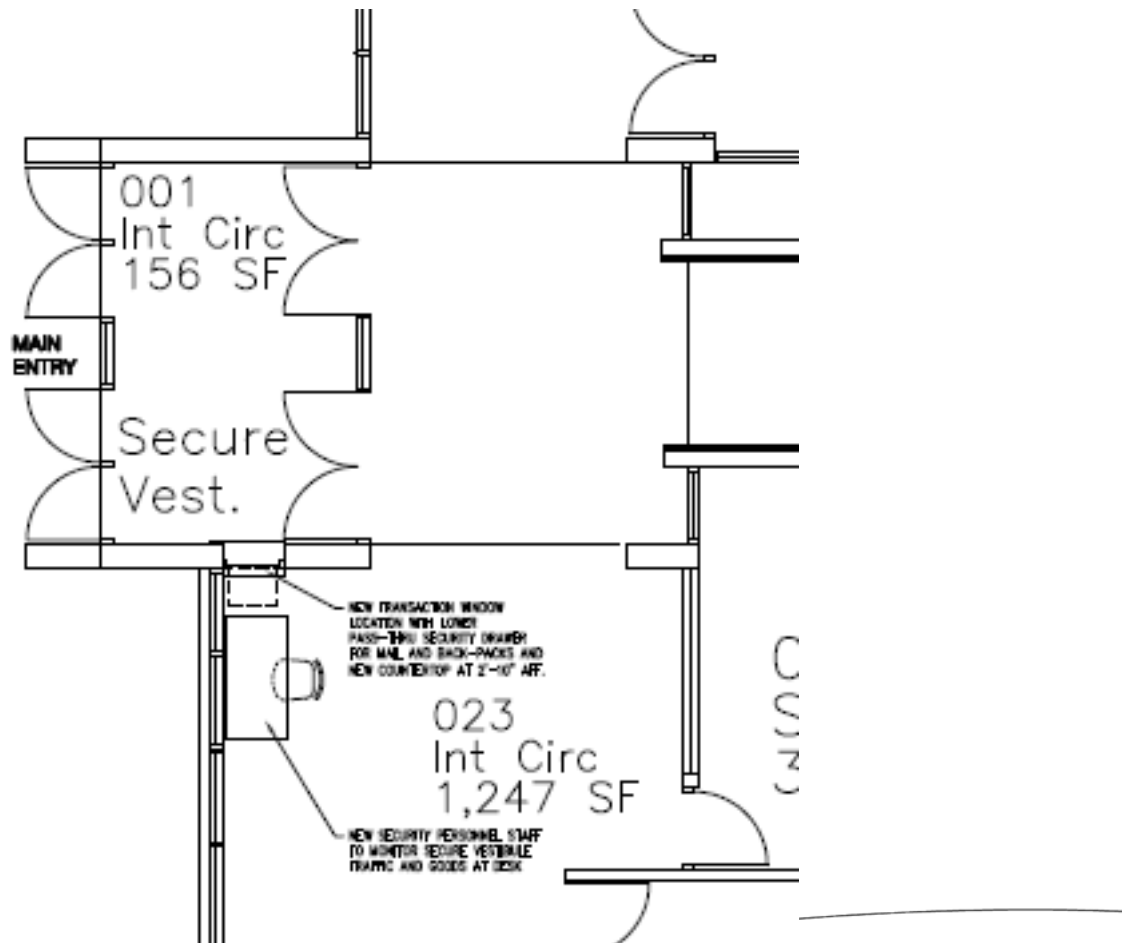
Mellin & Associates – Singletrack



Efficiency Future Ready Shelton ES

Construction

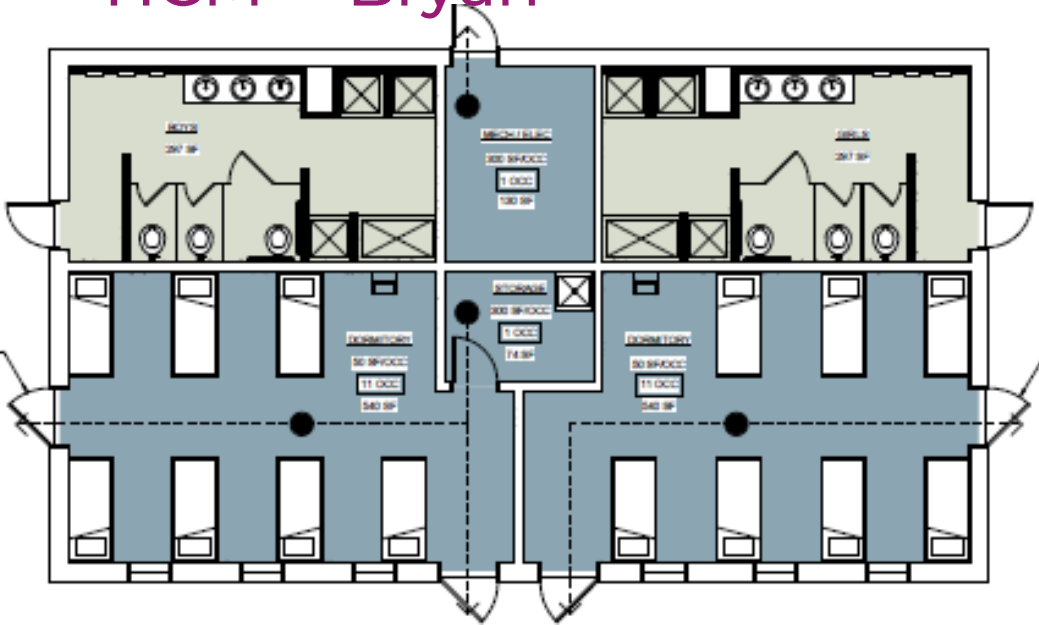
Mellin & Associates – Himmelman



Efficiency Future Ready Windy Peak OEL

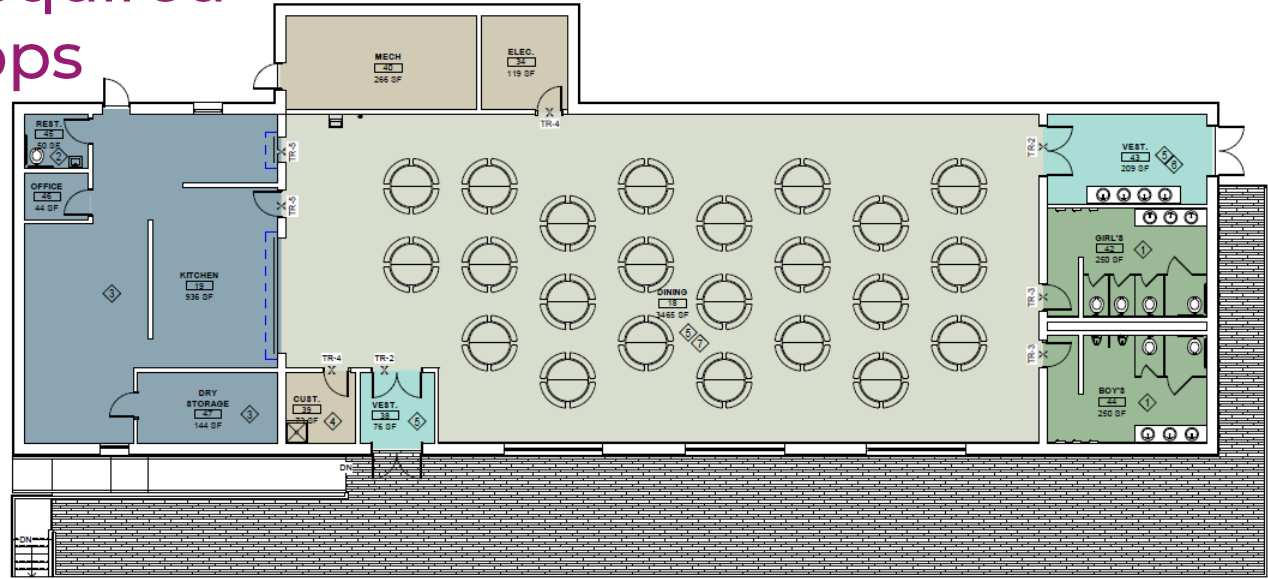
Construction

HCM – Bryan



Efficiency Future Ready
Mount Evans OEL
CAAC - Vote Required
HCM – GH Phipps

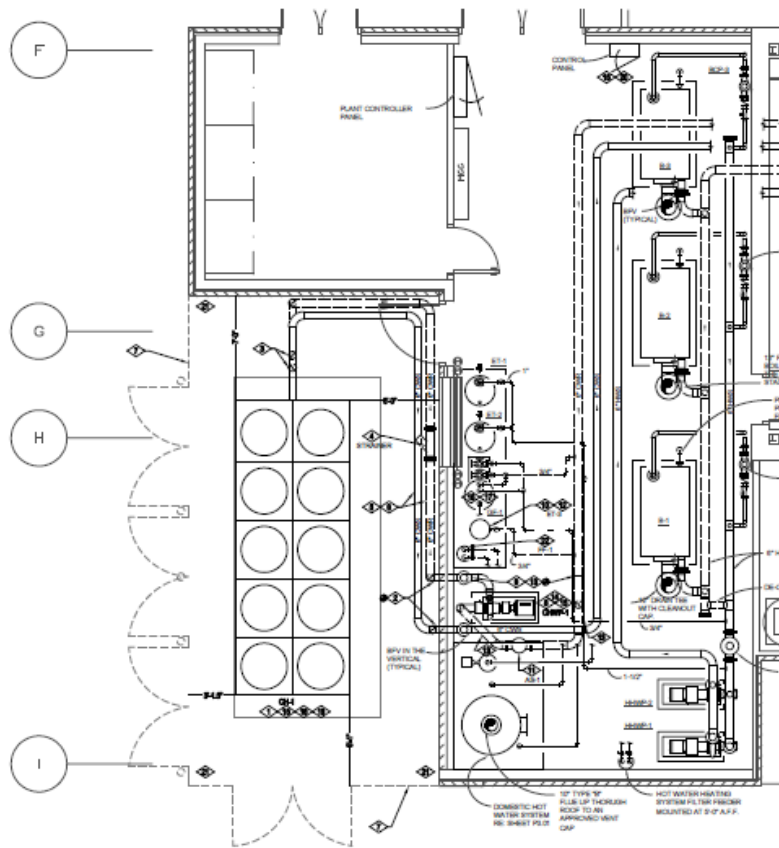
Construction



Efficiency Future Ready North Arvada MS

Construction

Columbine Engineering – JCOR



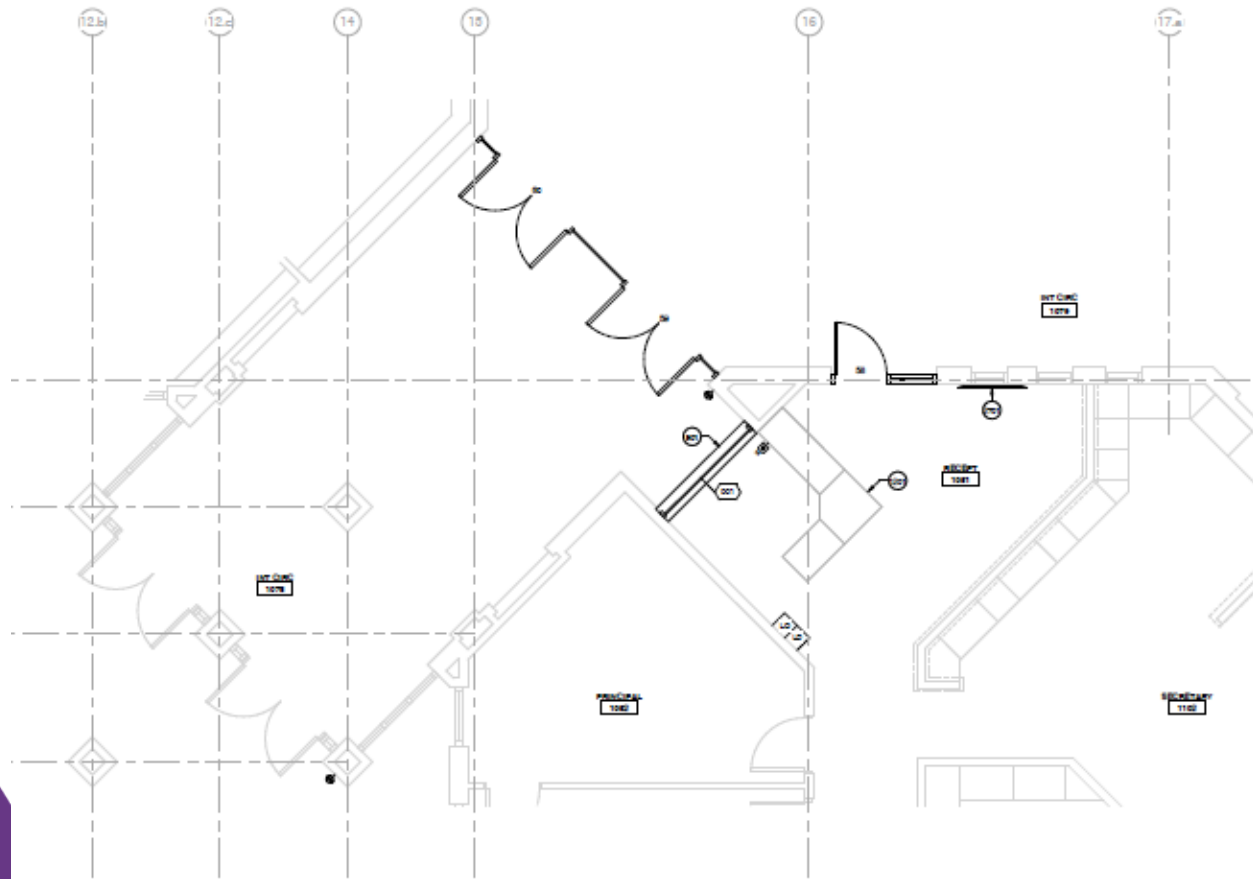
ENLARGED MECHANICAL ROOM NEW WORK PLAN

SCALE: 1/4" = 1'-0"

Efficiency Future Ready Stevens ES

Construction

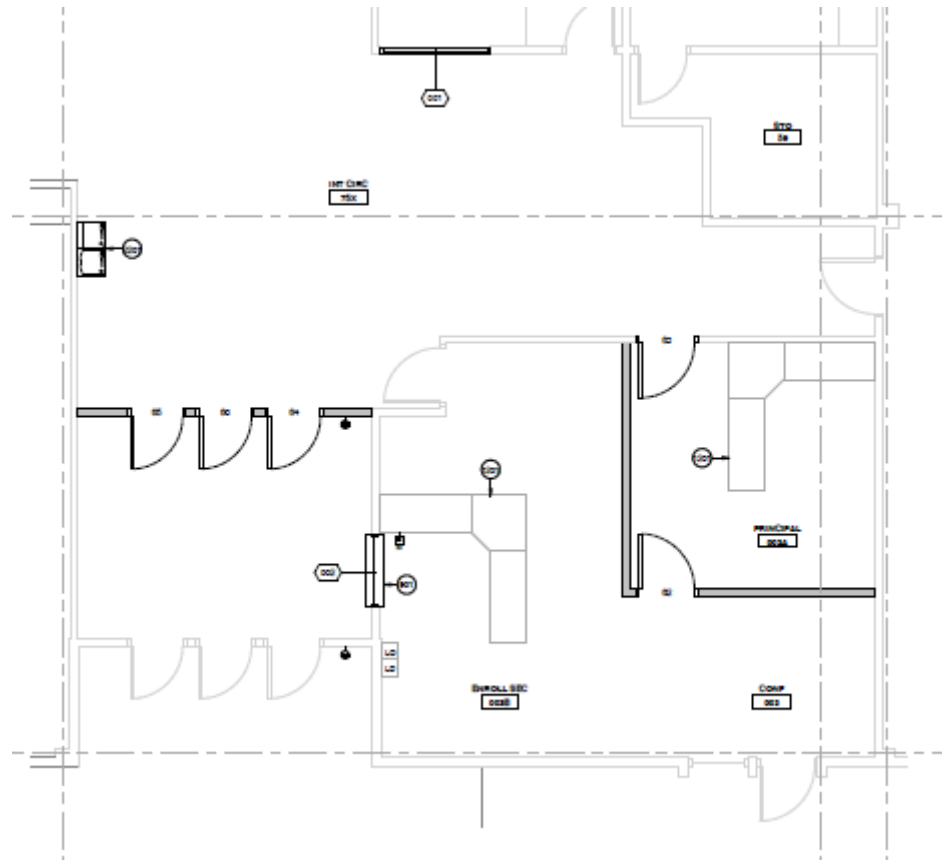
AMD – PG Arnold



Efficiency Future Ready Thomson ES

Construction

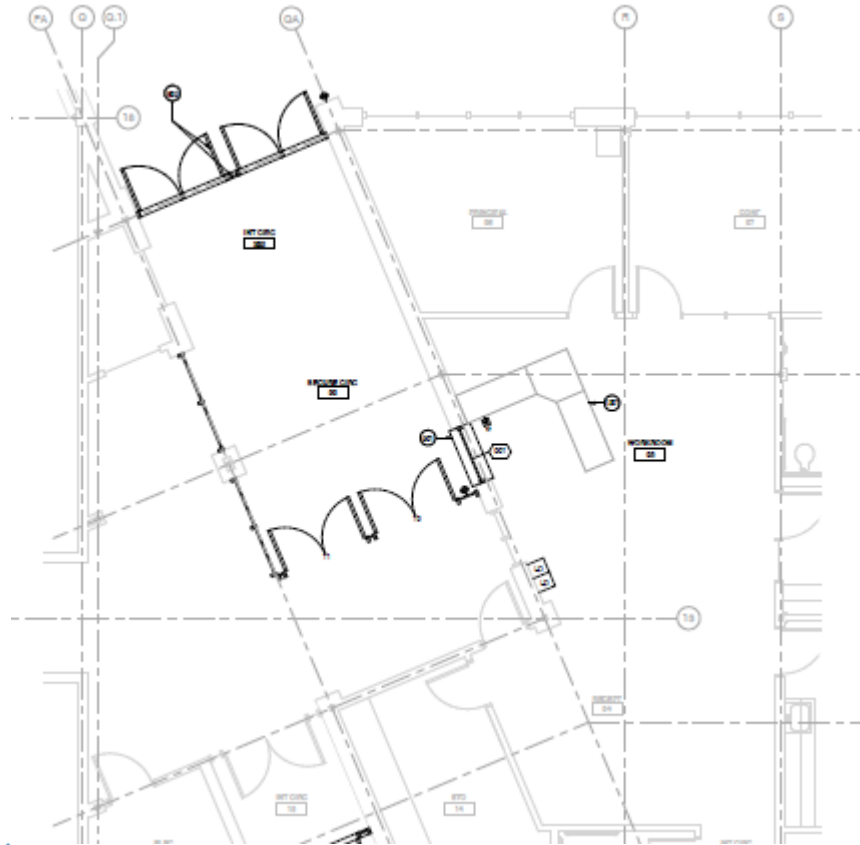
AMD – Bryan



Efficiency Future Ready Green Mountain ES

Construction

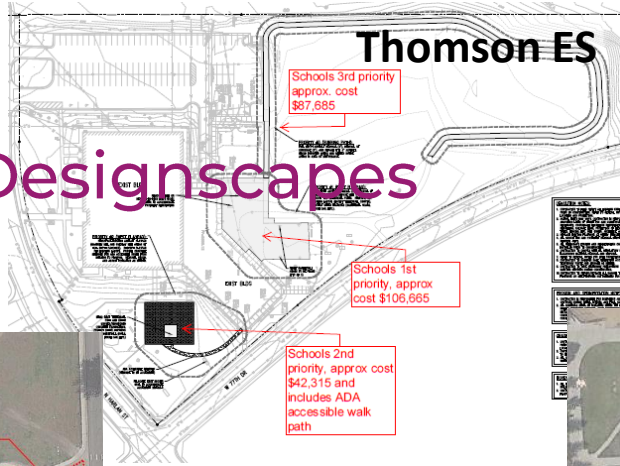
AMD – PG Arnold



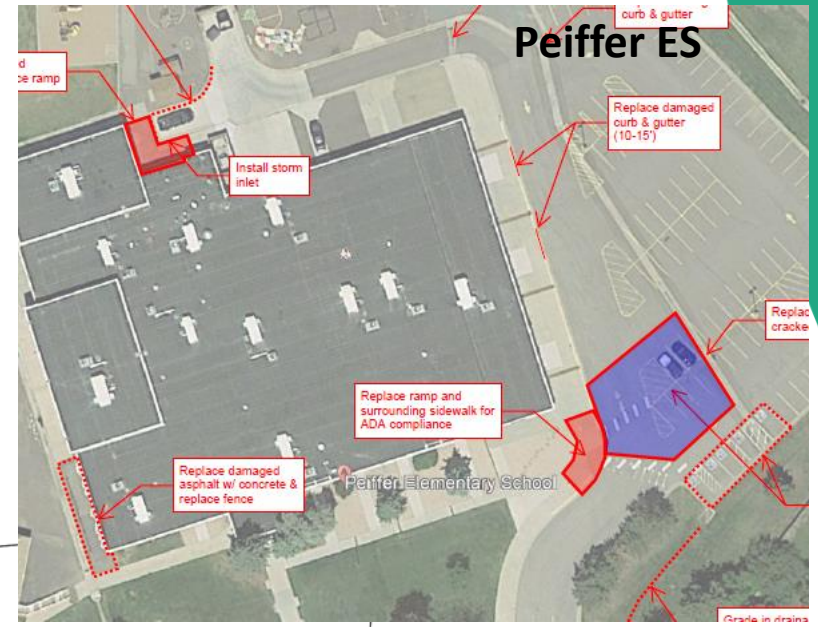
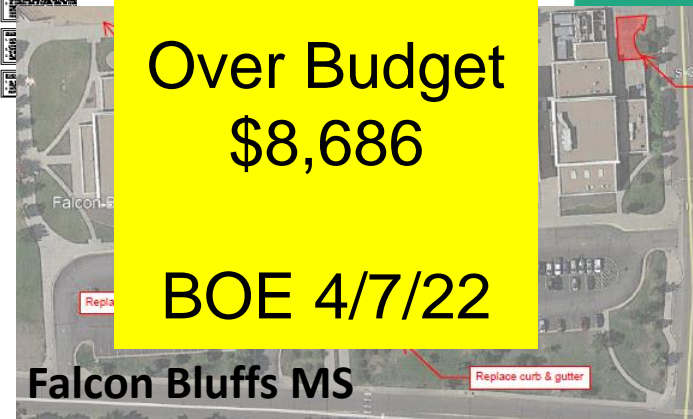
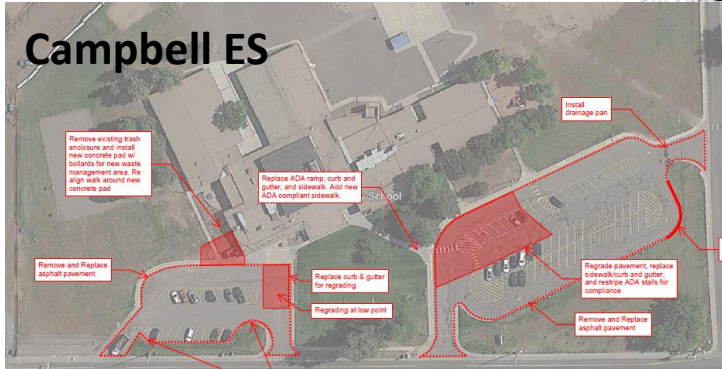
Re-Bid

| | | | |
|-------------|-----------|-------|------------------------------------|
| Mortensen | \$408,323 | ReBid | No Bid NO HVAC Sub Numbers |
| Shaffer | \$326,105 | ReBid | No Bid NO HVAC Sub Numbers |
| Blue Heron | \$384,562 | ReBid | \$ 1,503,686.00 1 Bidder |
| Ute Meadows | \$607,477 | ReBid | \$ 1,869,739.00 1 Bidder |
| Mandalay | \$680,932 | ReBid | \$ 1,308,400.00 High Electrical |

DW Paving 2022 JVA – Colorado Designscapes

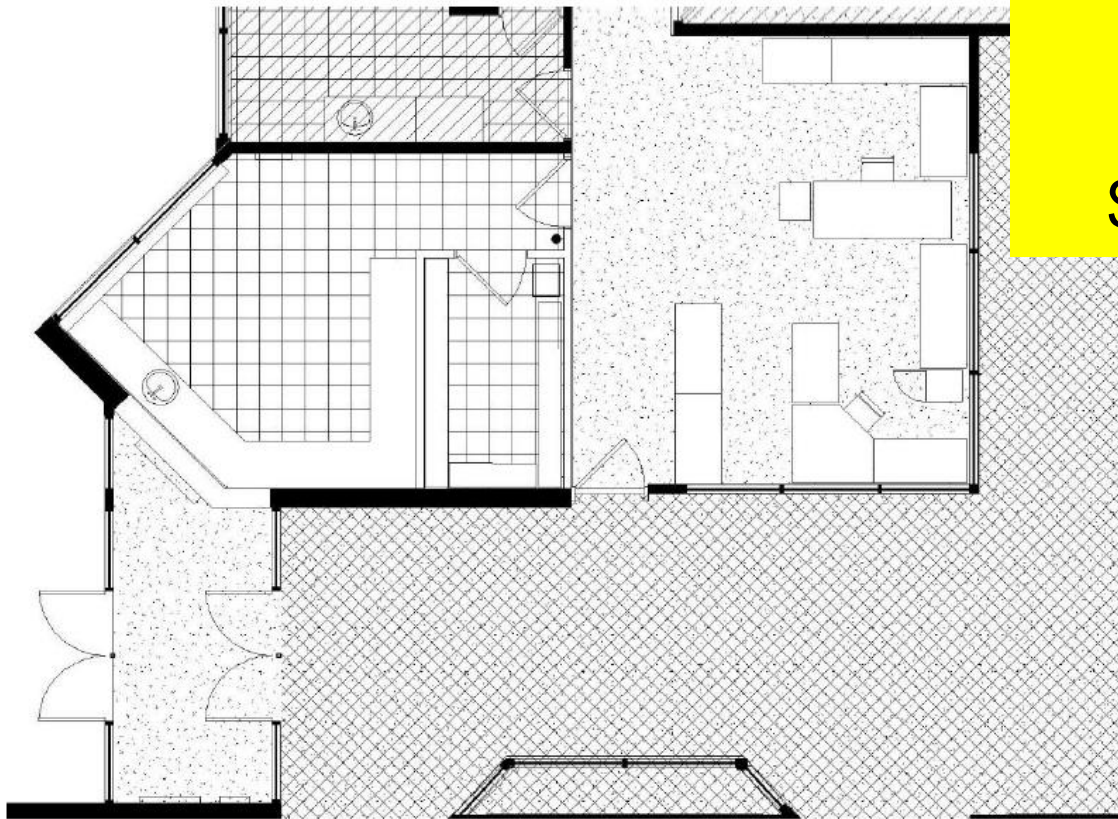


**Construction
Bid \$897,000
Over Budget
\$8,686
BOE 4/7/22**



Efficiency Future Ready Stony Creek ES

Jordin – Calahan



Construction

Bid \$425,786

Under
Budget

\$77,214

Efficiency Future Ready Bear Creek HS

MOA – Crossland

Construction

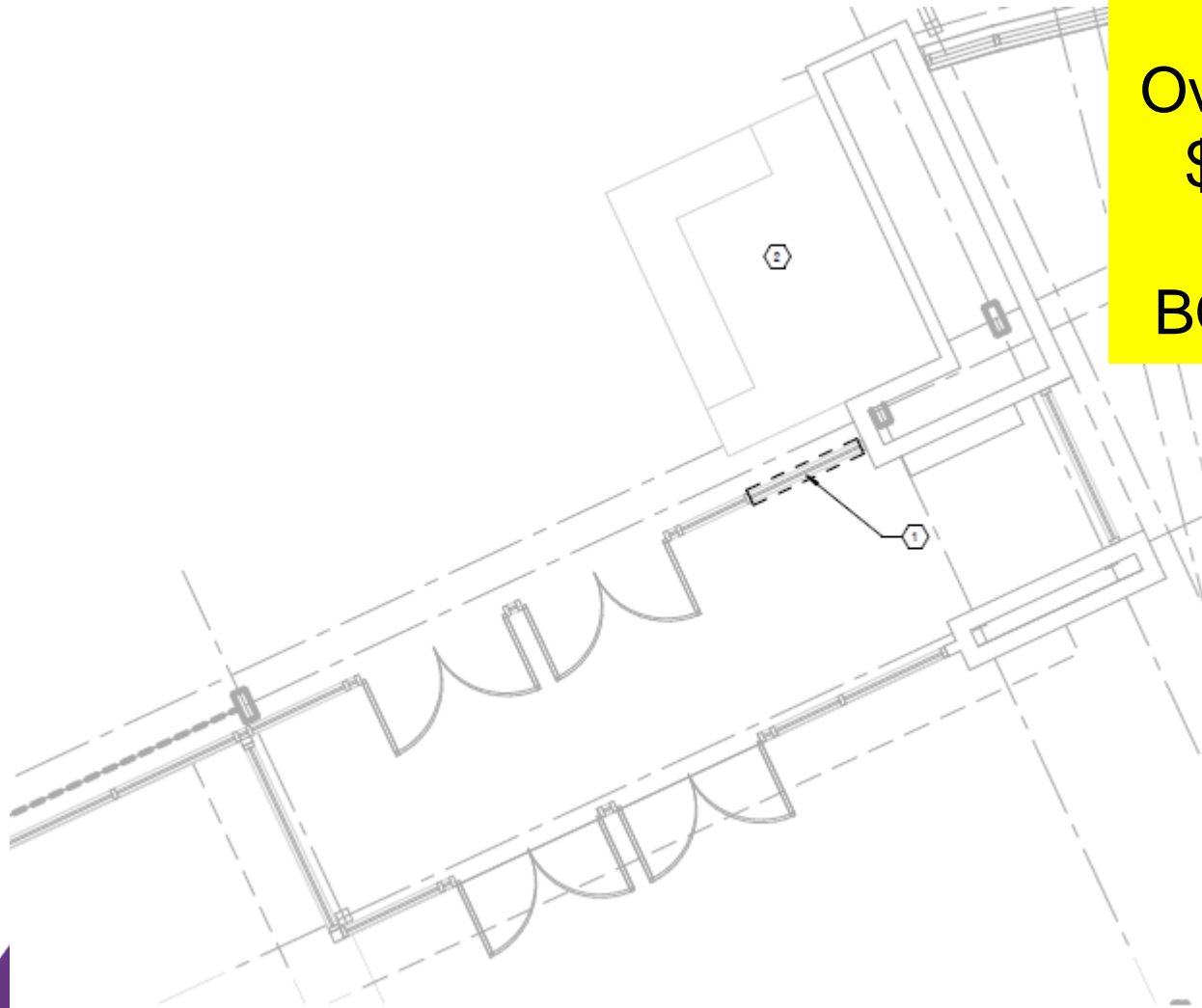
Bid

\$1,000,437

Over Budget

\$123,671

BOE 4/7/22



Efficiency Future Ready Warder ES

RB+B – Golden Triangle

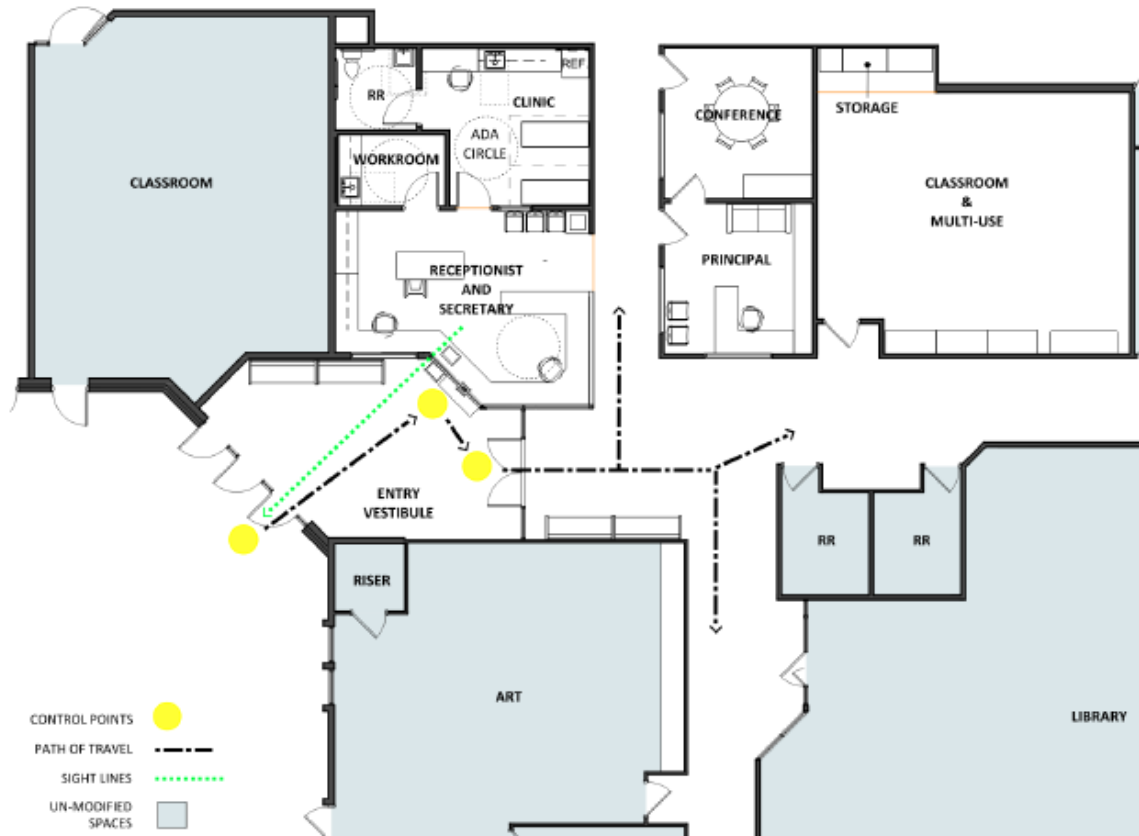
Construction

Bid \$886,400

Over Budget
\$587,486

Secure entry
\$382,700

BOE 4/7/22



VOTE



Efficiency Future Ready Warren Tech North

LOA – Golden Triangle



Construction

Bid \$923,400

Over Budget
\$604,450

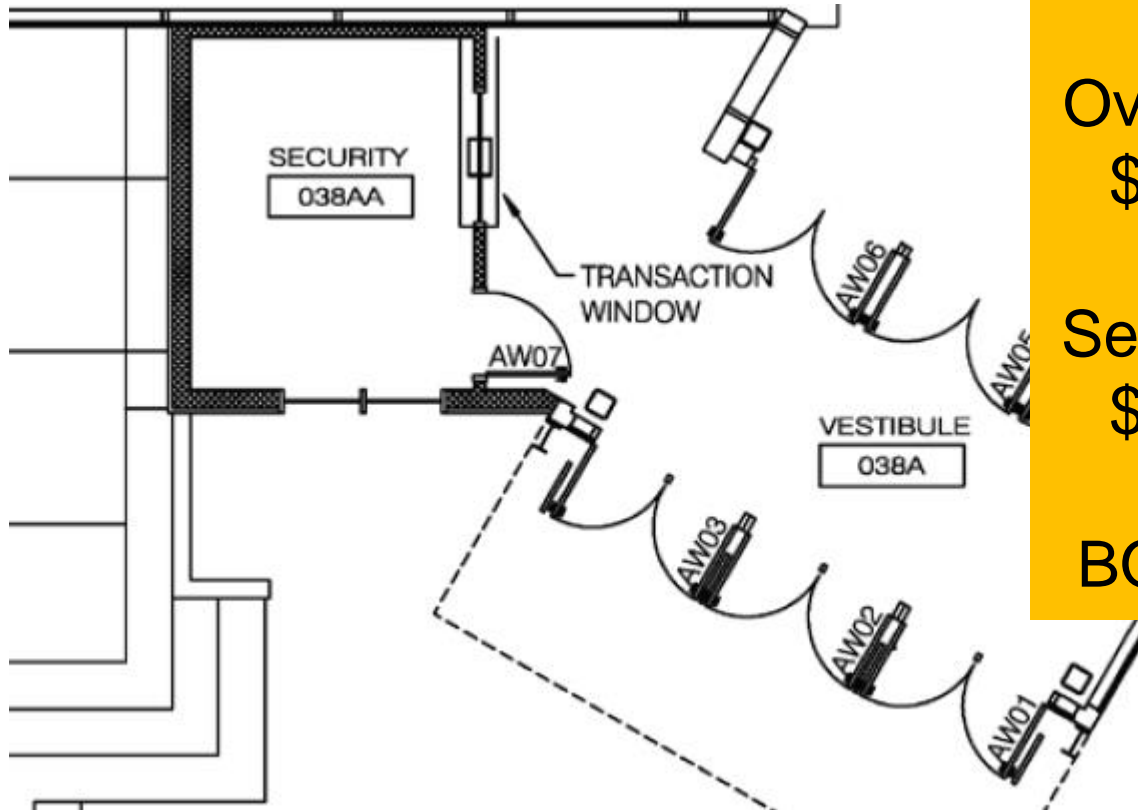
Secure entry
\$291,700

BOE 4/7/22

VOTE

Efficiency Future Ready Arvada West HS

LOA – Golden Triangle



Construction
Bid
\$1,360,900
Over Budget
\$562,083
Secure entry
\$391,200
BOE 4/7/22

VOTE

Efficiency Future Ready Colorow ES

MOA – Crossland

Construction

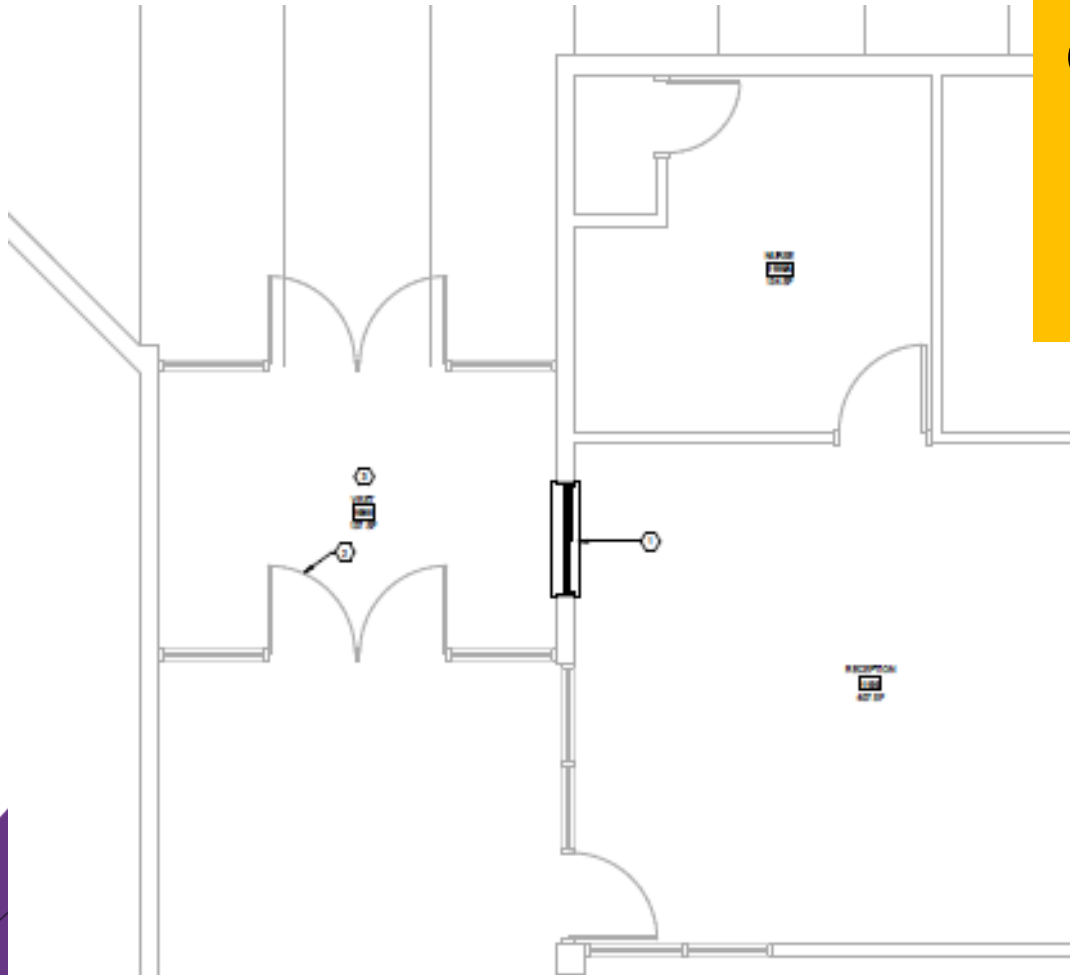
Bid

\$1,760,233

Over Budget

\$476,233

BOE 4/7/22



VOTE ?

DW – Flooring I

Dear Creek MS, Falcon Bluffs MS,

Summit Ridge MS, Peiffer ES,

Governor's Ranch ES, Mt Carbon ES,

Rooney Ranch ES

AMD – PG Arnold - SCS (3 Gym Floors)



Mt Carbon ES



Rooney Ranch ES



Governor's Ranch ES

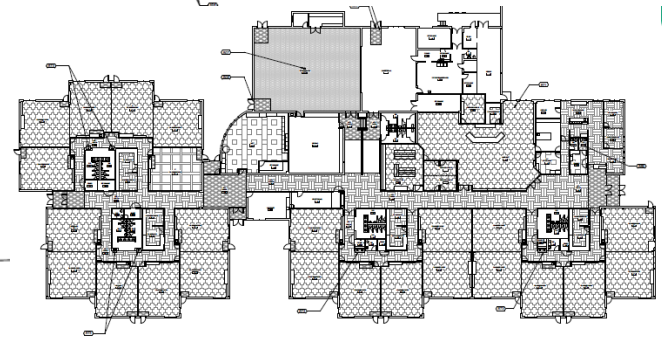
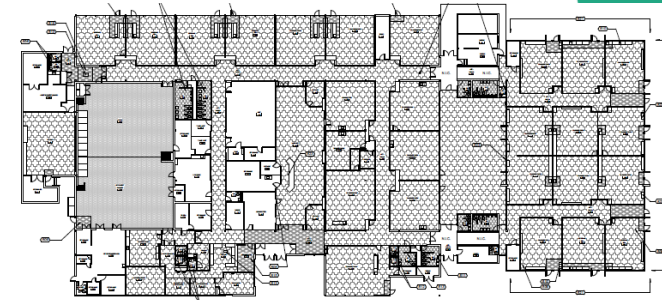
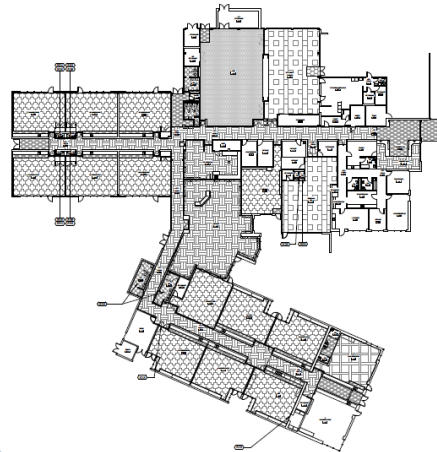
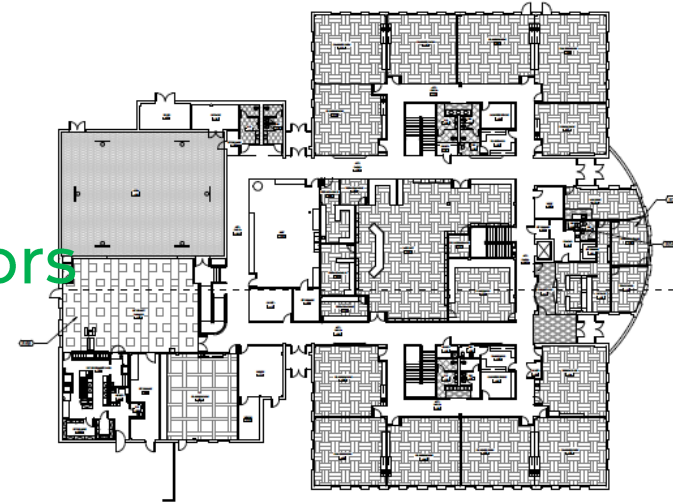
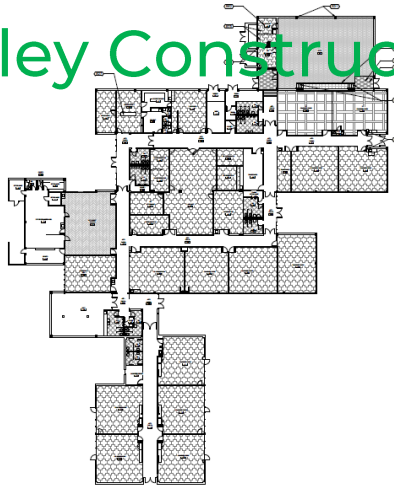
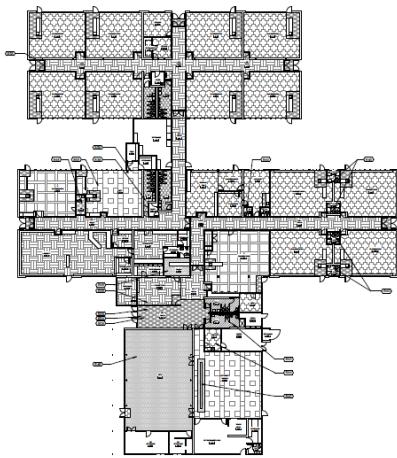
DW – Flooring II

Glennon Heights ES, Little ES, Parr ES

Pennington ES, S Lakewood ES

Swanson ES, Van Arsdale ES

studitrope – McCauley Constructors



DW Playgrounds II 2022 Lime Green – T2

Confirm location of ADA HC ramp

GENERAL NOTES

1. VERIFY ALL DIMENSIONS AND LOCATIONS OF ALL EQUIPMENT AND SURFACING ARE AS SHOWN ON THIS PLAN.
2. VERIFY ALL DIMENSIONS AND LOCATIONS OF ALL EQUIPMENT AND SURFACING ARE AS SHOWN ON THIS PLAN.
3. VERIFY ALL DIMENSIONS AND LOCATIONS OF ALL EQUIPMENT AND SURFACING ARE AS SHOWN ON THIS PLAN.
4. VERIFY ALL DIMENSIONS AND LOCATIONS OF ALL EQUIPMENT AND SURFACING ARE AS SHOWN ON THIS PLAN.
5. VERIFY ALL DIMENSIONS AND LOCATIONS OF ALL EQUIPMENT AND SURFACING ARE AS SHOWN ON THIS PLAN.
6. VERIFY ALL DIMENSIONS AND LOCATIONS OF ALL EQUIPMENT AND SURFACING ARE AS SHOWN ON THIS PLAN.
7. VERIFY ALL DIMENSIONS AND LOCATIONS OF ALL EQUIPMENT AND SURFACING ARE AS SHOWN ON THIS PLAN.
8. VERIFY ALL DIMENSIONS AND LOCATIONS OF ALL EQUIPMENT AND SURFACING ARE AS SHOWN ON THIS PLAN.
9. VERIFY ALL DIMENSIONS AND LOCATIONS OF ALL EQUIPMENT AND SURFACING ARE AS SHOWN ON THIS PLAN.
10. VERIFY ALL DIMENSIONS AND LOCATIONS OF ALL EQUIPMENT AND SURFACING ARE AS SHOWN ON THIS PLAN.

KEY NOTES

1. SEE SPECIFICATIONS FOR ALL EQUIPMENT AND SURFACING.

2. SEE SPECIFICATIONS FOR ALL EQUIPMENT AND SURFACING.

3. SEE SPECIFICATIONS FOR ALL EQUIPMENT AND SURFACING.

4. SEE SPECIFICATIONS FOR ALL EQUIPMENT AND SURFACING.

5. SEE SPECIFICATIONS FOR ALL EQUIPMENT AND SURFACING.

6. SEE SPECIFICATIONS FOR ALL EQUIPMENT AND SURFACING.

7. SEE SPECIFICATIONS FOR ALL EQUIPMENT AND SURFACING.

8. SEE SPECIFICATIONS FOR ALL EQUIPMENT AND SURFACING.

9. SEE SPECIFICATIONS FOR ALL EQUIPMENT AND SURFACING.

10. SEE SPECIFICATIONS FOR ALL EQUIPMENT AND SURFACING.

SYMBOL LEGEND

1. SEE SPECIFICATIONS FOR ALL EQUIPMENT AND SURFACING.

2. SEE SPECIFICATIONS FOR ALL EQUIPMENT AND SURFACING.

3. SEE SPECIFICATIONS FOR ALL EQUIPMENT AND SURFACING.

4. SEE SPECIFICATIONS FOR ALL EQUIPMENT AND SURFACING.

5. SEE SPECIFICATIONS FOR ALL EQUIPMENT AND SURFACING.

6. SEE SPECIFICATIONS FOR ALL EQUIPMENT AND SURFACING.

7. SEE SPECIFICATIONS FOR ALL EQUIPMENT AND SURFACING.

8. SEE SPECIFICATIONS FOR ALL EQUIPMENT AND SURFACING.

9. SEE SPECIFICATIONS FOR ALL EQUIPMENT AND SURFACING.

10. SEE SPECIFICATIONS FOR ALL EQUIPMENT AND SURFACING.

**JEFFCO PUBLIC SCHOOLS
CAMPBELL ELEMENTARY
PLAYGROUND IMPROVEMENTS
1500 Oak Street, Aurora, CO 80010**

PROJECT

DATE: 11/15/2022

DESIGNED BY: JEFFCO

DRAWN BY: JEFFCO

CHECKED BY: JEFFCO

APPROVED BY: JEFFCO

PHOTOS

Campbell ES

GENERAL NOTES

1. VERIFY ALL DIMENSIONS AND LOCATIONS OF ALL EQUIPMENT AND SURFACING ARE AS SHOWN ON THIS PLAN.
2. VERIFY ALL DIMENSIONS AND LOCATIONS OF ALL EQUIPMENT AND SURFACING ARE AS SHOWN ON THIS PLAN.
3. VERIFY ALL DIMENSIONS AND LOCATIONS OF ALL EQUIPMENT AND SURFACING ARE AS SHOWN ON THIS PLAN.
4. VERIFY ALL DIMENSIONS AND LOCATIONS OF ALL EQUIPMENT AND SURFACING ARE AS SHOWN ON THIS PLAN.
5. VERIFY ALL DIMENSIONS AND LOCATIONS OF ALL EQUIPMENT AND SURFACING ARE AS SHOWN ON THIS PLAN.
6. VERIFY ALL DIMENSIONS AND LOCATIONS OF ALL EQUIPMENT AND SURFACING ARE AS SHOWN ON THIS PLAN.
7. VERIFY ALL DIMENSIONS AND LOCATIONS OF ALL EQUIPMENT AND SURFACING ARE AS SHOWN ON THIS PLAN.
8. VERIFY ALL DIMENSIONS AND LOCATIONS OF ALL EQUIPMENT AND SURFACING ARE AS SHOWN ON THIS PLAN.
9. VERIFY ALL DIMENSIONS AND LOCATIONS OF ALL EQUIPMENT AND SURFACING ARE AS SHOWN ON THIS PLAN.
10. VERIFY ALL DIMENSIONS AND LOCATIONS OF ALL EQUIPMENT AND SURFACING ARE AS SHOWN ON THIS PLAN.

KEY NOTES

1. SEE SPECIFICATIONS FOR ALL EQUIPMENT AND SURFACING.

2. SEE SPECIFICATIONS FOR ALL EQUIPMENT AND SURFACING.

3. SEE SPECIFICATIONS FOR ALL EQUIPMENT AND SURFACING.

4. SEE SPECIFICATIONS FOR ALL EQUIPMENT AND SURFACING.

5. SEE SPECIFICATIONS FOR ALL EQUIPMENT AND SURFACING.

6. SEE SPECIFICATIONS FOR ALL EQUIPMENT AND SURFACING.

7. SEE SPECIFICATIONS FOR ALL EQUIPMENT AND SURFACING.

8. SEE SPECIFICATIONS FOR ALL EQUIPMENT AND SURFACING.

9. SEE SPECIFICATIONS FOR ALL EQUIPMENT AND SURFACING.

10. SEE SPECIFICATIONS FOR ALL EQUIPMENT AND SURFACING.

SYMBOL LEGEND

1. SEE SPECIFICATIONS FOR ALL EQUIPMENT AND SURFACING.

2. SEE SPECIFICATIONS FOR ALL EQUIPMENT AND SURFACING.

3. SEE SPECIFICATIONS FOR ALL EQUIPMENT AND SURFACING.

4. SEE SPECIFICATIONS FOR ALL EQUIPMENT AND SURFACING.

5. SEE SPECIFICATIONS FOR ALL EQUIPMENT AND SURFACING.

6. SEE SPECIFICATIONS FOR ALL EQUIPMENT AND SURFACING.

7. SEE SPECIFICATIONS FOR ALL EQUIPMENT AND SURFACING.

8. SEE SPECIFICATIONS FOR ALL EQUIPMENT AND SURFACING.

9. SEE SPECIFICATIONS FOR ALL EQUIPMENT AND SURFACING.

10. SEE SPECIFICATIONS FOR ALL EQUIPMENT AND SURFACING.

**JEFFCO PUBLIC SCHOOLS
FAIRMOUNT ELEMENTARY
PLAYGROUND IMPROVEMENTS
1595 W. 59TH AVE., GOLDEN, CO 80401**

PROJECT

DATE: 11/15/2022

DESIGNED BY: JEFFCO

DRAWN BY: JEFFCO

CHECKED BY: JEFFCO

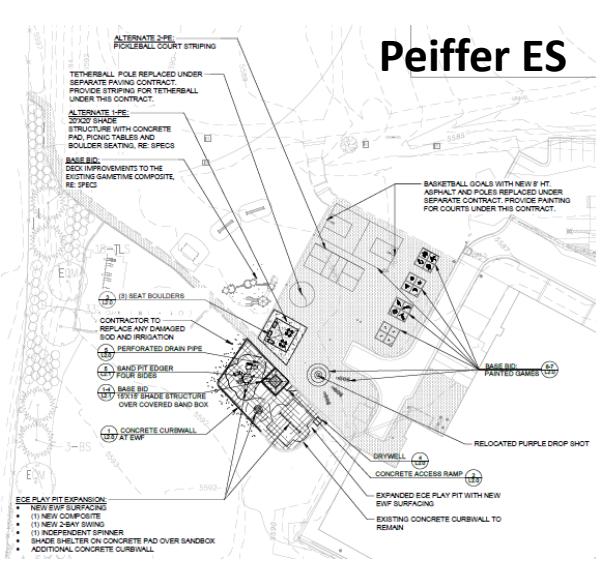
APPROVED BY: JEFFCO

PHOTOS

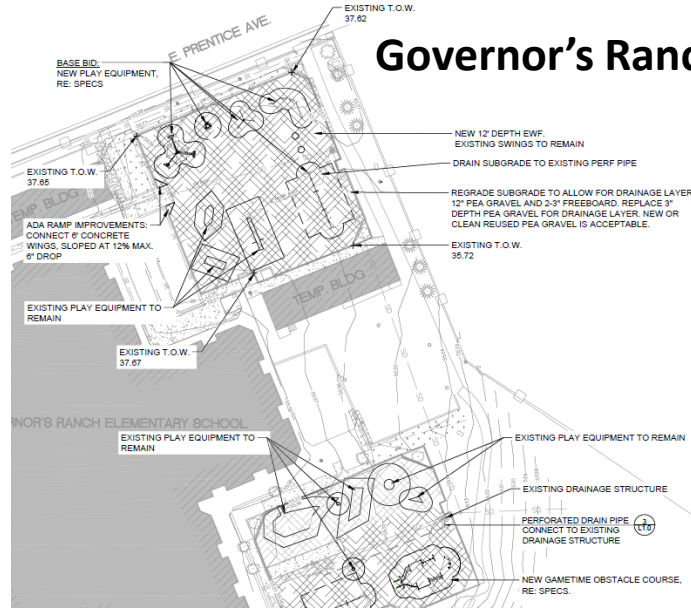
Fairmount ES

DW Playgrounds I 2022 Design Concepts – TBD

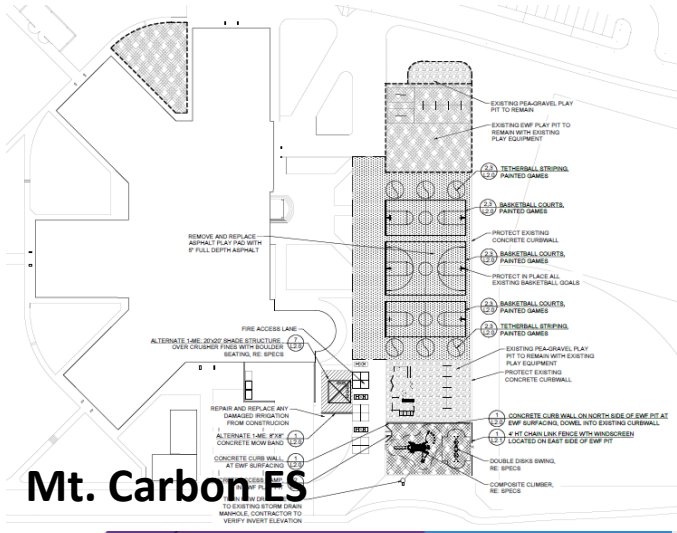
Construction Documents
Bids 3/17



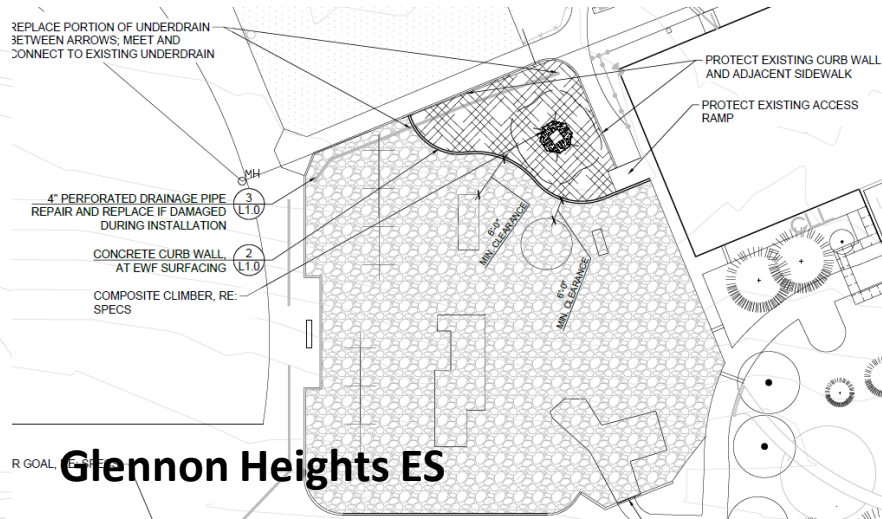
Peiffer ES



Governor's Ranch ES



Mt. Carbon ES

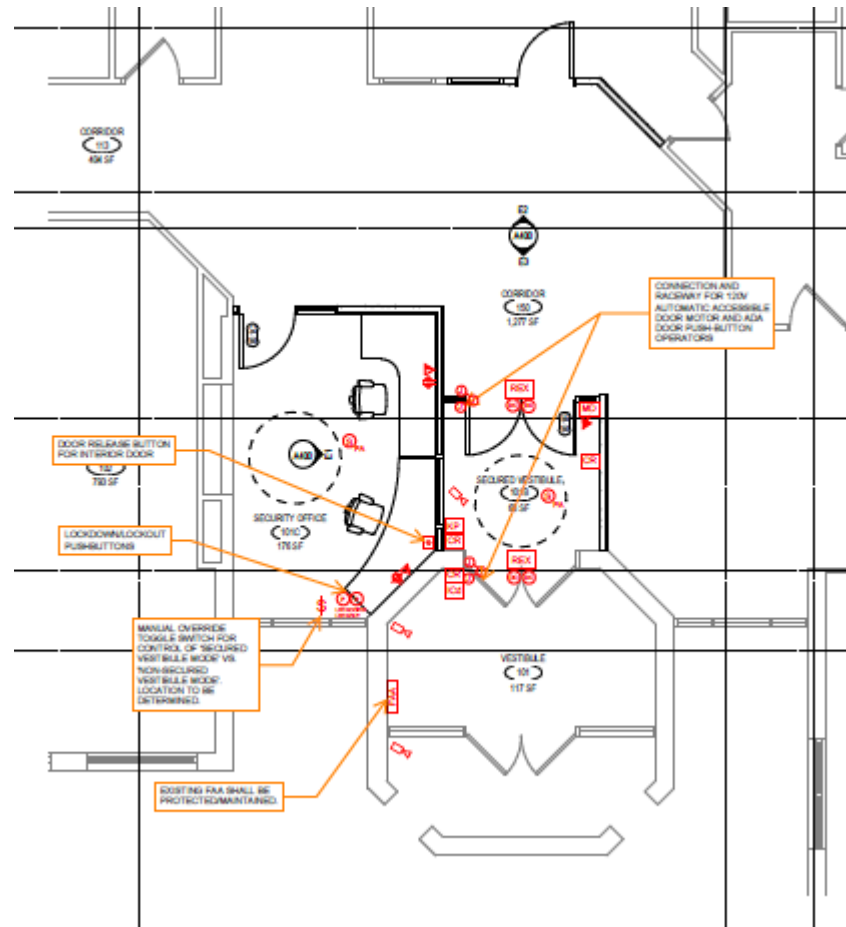


Glennon Heights ES

Efficiency Future Ready Bergen Valley ES

Construction
Documents
Bids 3/17/22

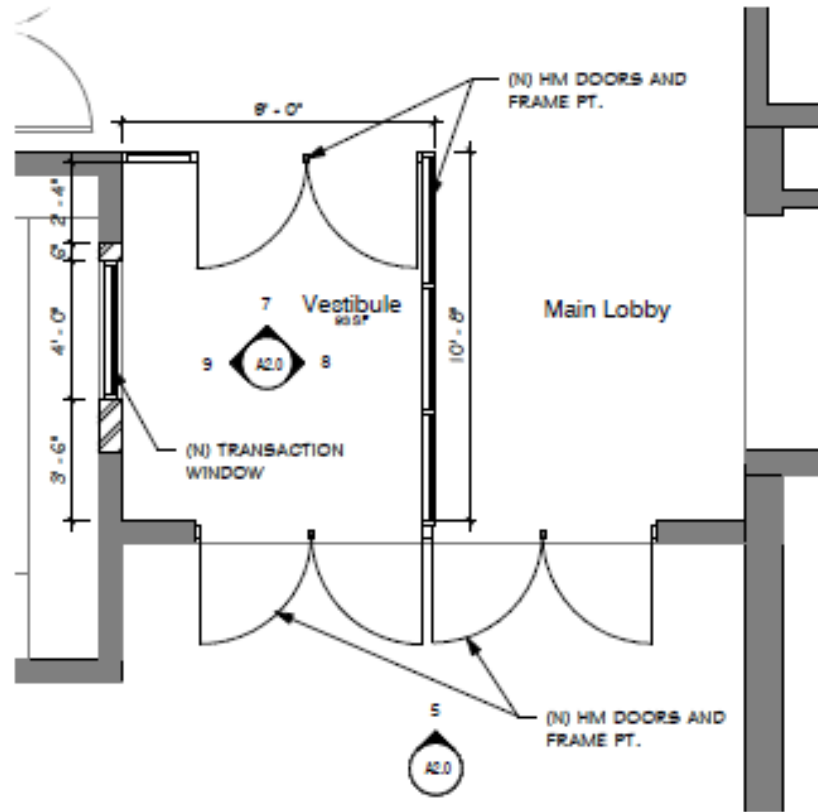
EUA – TBD



Efficiency Future Ready Slater ES

Construction
Documents
Bids 3/17/22

Eidos – TBD



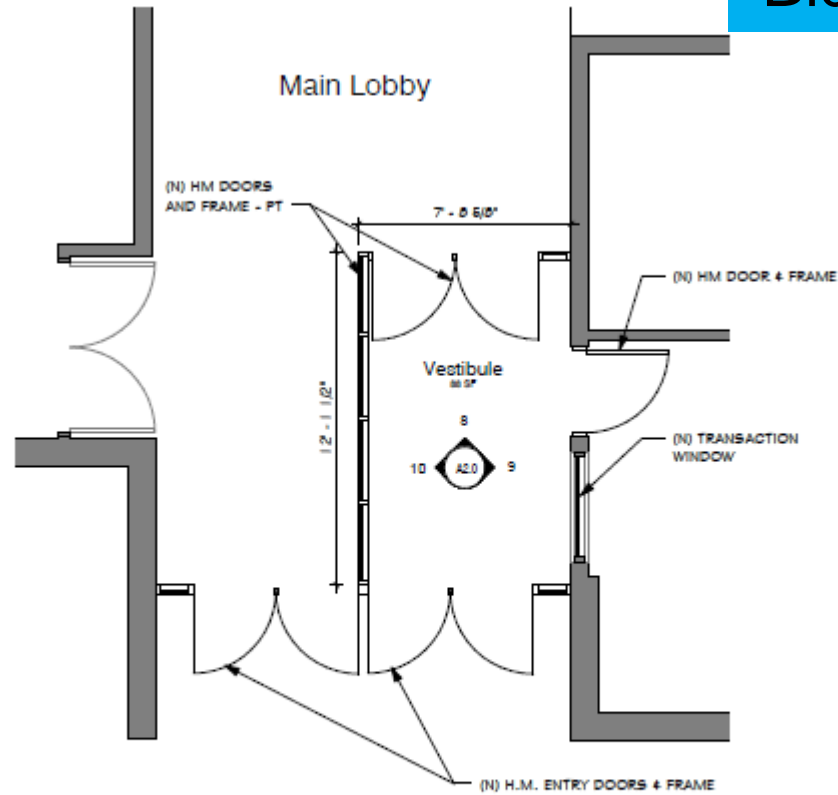
4. Enlarged Plan

1/4" = 1'-0"

Efficiency Future Ready Wilmore Davis ES

Construction
Documents
Bids 3/17/22

Eidos – TBD



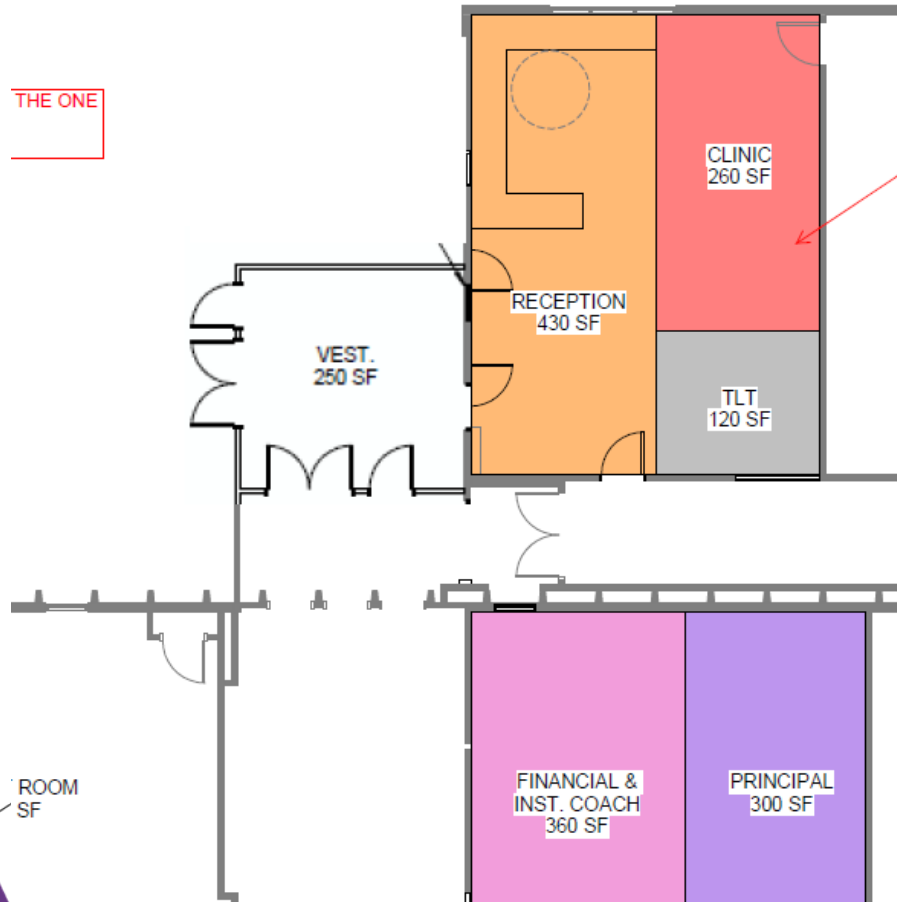
1. Enlarged Plan

1/4" = 1'-0"

Efficiency Future Ready Westgate ES

Construction
Documents
Bids 3/22/22

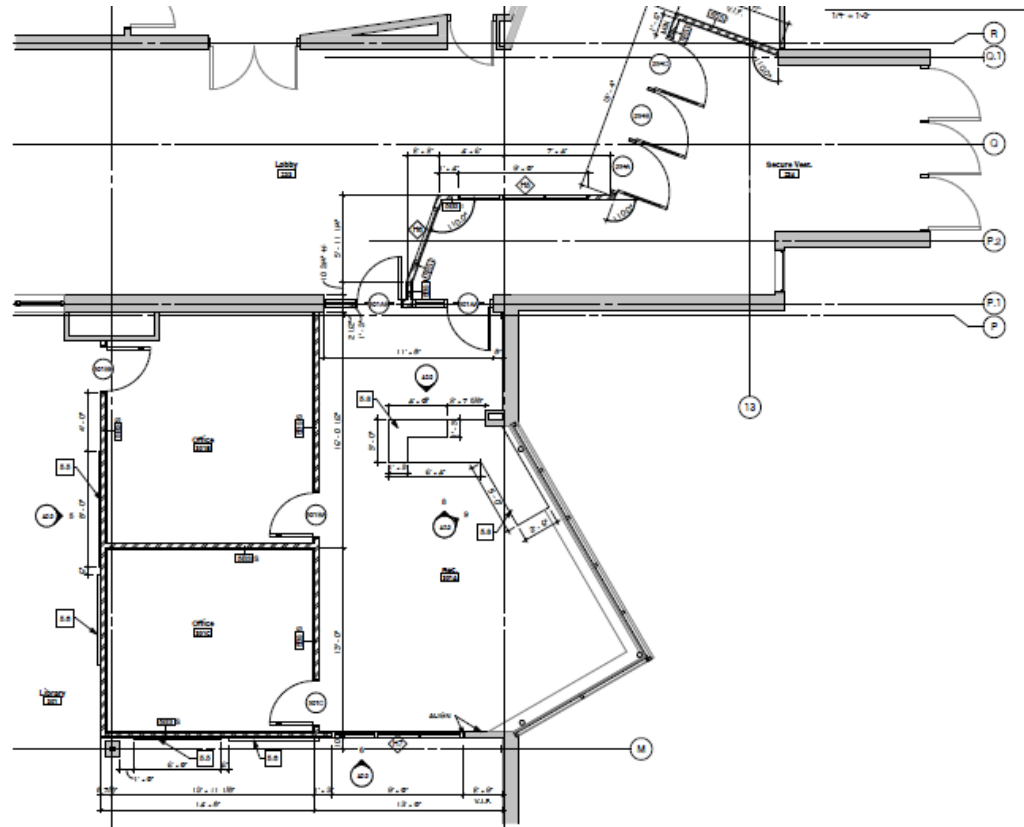
Treanor HL- TBD



Efficiency Future Ready North Arvada MS

Construction
Documents
Bids 3/22/22

Eidos – TBD

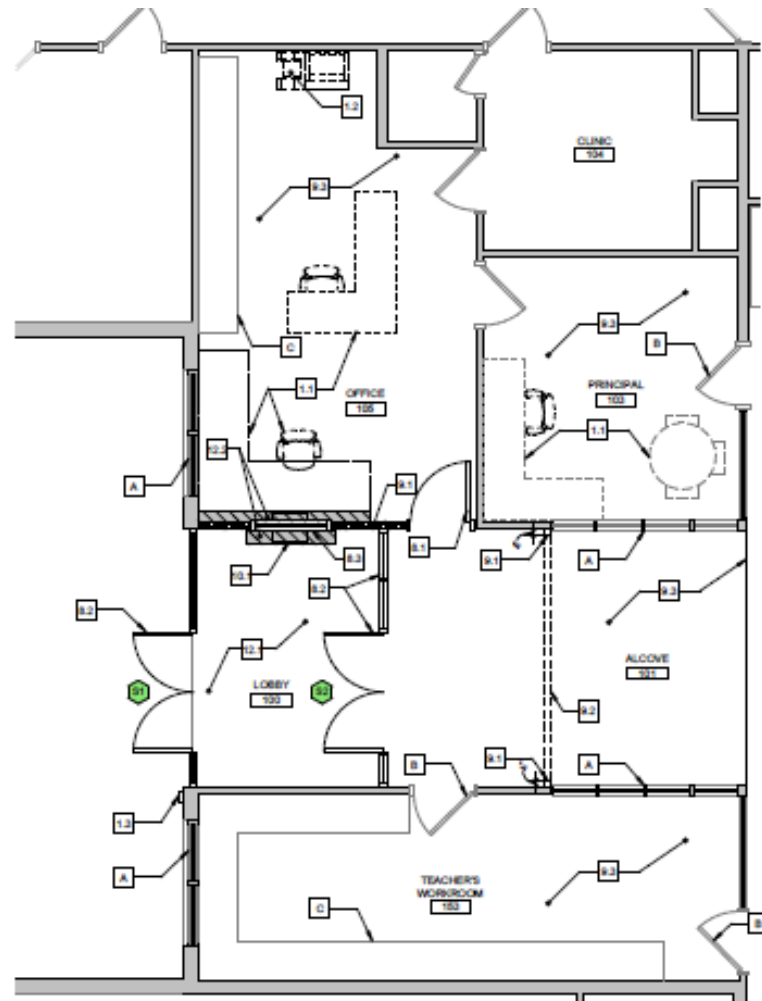


4. Secure Vestibule and Office Enlarged Plan
1/8" = 1'-0"

Efficiency Future Ready Peck ES

Construction
Documents
Bids 3/23/22

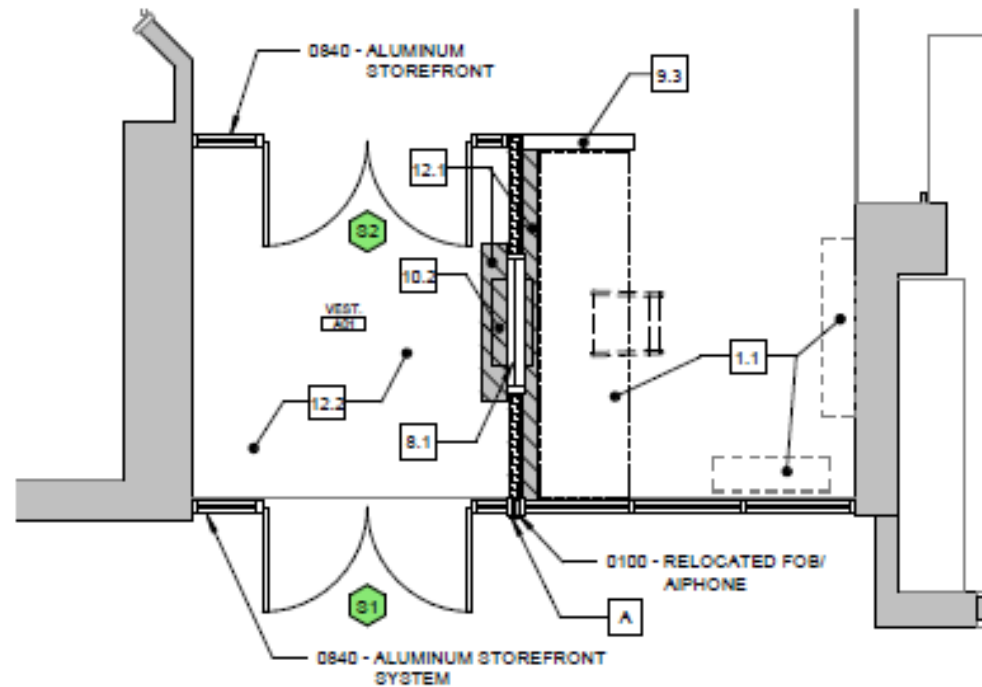
Larson Incitti – TBD



Efficiency Future Ready Secret ES

Construction
Documents
Bids 3/23/22

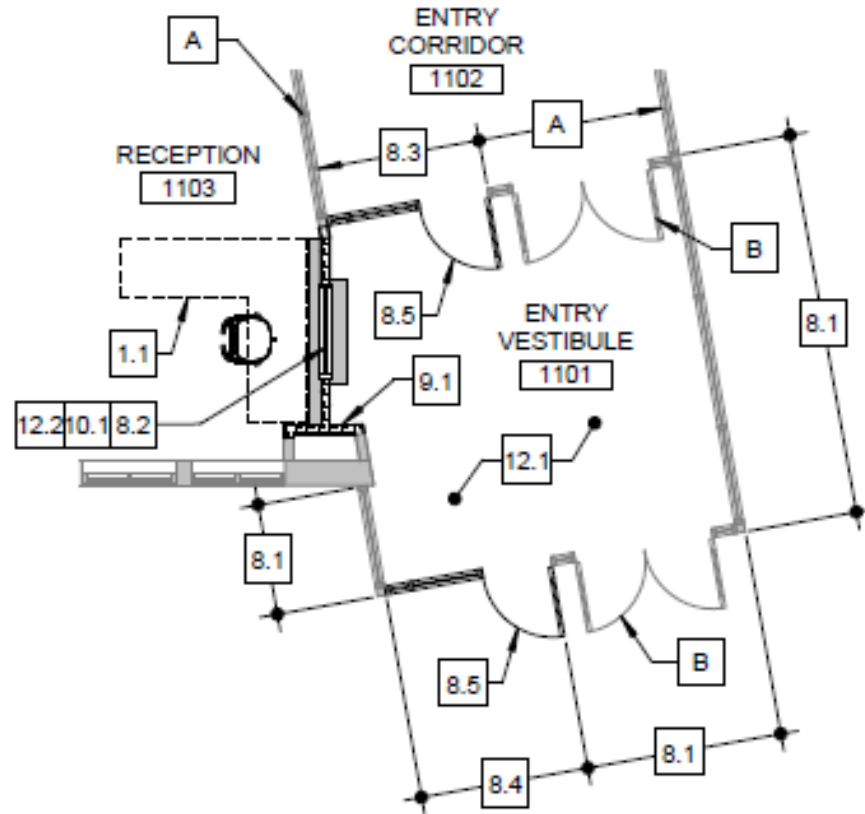
Larson Incitti – TBD



Efficiency Future Ready Creighton MS

Construction
Documents
Bids 3/23/22

Larson Incitti – TBD



DW LED 2022

Ackerman – CMGC McKinstry

Design Development



1. Lawrence ES
2. Brady
3. Bradford North
4. Bradford South
5. Ute Meadows ES
6. Leawood ES
7. Normandy ES
8. Rooney Ranch ES
9. Creighton MS
10. Moore MS
11. Weber ES
12. Meiklejohn
13. West Woods
14. Chatfield HS
15. Dakota Ridge HS

Security Glass Installation 11 - Schools

| | |
|---------------|-----------------|
| Swanson | Glennon Heights |
| Arvada West | S Lakewood |
| Canpbell | Little |
| Fairmount | Parr |
| Bear Creek K8 | Pennington |
| Summit Ridge | |



Efficiency Future Ready Wheat Ridge HS

Design
Development

Eidos – TBD



Efficiency Future Ready Wheat Ridge HS

Design
Development

Eidos – TBD

Entry | Cafeteria | Commons:



Efficiency Future Ready Wheat Ridge HS

Design Development

Commons:



Next Meeting 4/21/22